

EURO



AMAWATERWAYS™

LEADING THE WAY IN RIVER CRUISING



EUROPE & ASIA
2020

OUR STORY

AmaWaterways was founded in 2002 by three families, but our river cruise story began well before that. Co-founder and President Rudi Schreiner was born in Vienna, at the heart of the Danube. In 1975, as part of a journalism assignment, he designed his first ship, a raft he took along the Amazon River. Soon thereafter he started working in travel, creating unique tour experiences in Europe.

“There are certain experiences in life that end up drawing you down a path you had never envisioned yourself taking. My Amazon River trip made me want to help more people discover the joy of travelling through a country by river – and creating AmaWaterways with Kristin and Jimmy made this dream a reality.” – Rudi Schreiner

When the Rhine-Main-Danube Canal was built in 1992, Rudi became a driving force in the river cruising industry. He later teamed up with co-founders Kristin Karst and Jimmy Murphy to start AmaWaterways.

Born in Germany, Kristin brings extensive experience in travel, river cruising and customer service to her role as Executive Vice President. Jimmy was a brilliant travel entrepreneur who built Brendan Vacations, and his son Gary now carries on his father's legacy in his role as Senior Vice President of Sales.

“Travel has been my life's passion and my greatest source of inspiration and creativity. I am very proud of AmaWaterways' success – it has taken grit, optimism and the insight to surround ourselves with really talented people who treat every new challenge as an opportunity to think differently and create something new that helps us stand out from the crowd.” – Kristin Karst

Since 2016, we have continued the high standards set by Rudi, Kristin and Jimmy at our first UK office servicing the UK & Europe, based in Guildford, UK. Led by Managing Director Stuart Perl, this new branch of the family strives to bring our award-winning river cruises to more people throughout the United Kingdom, Europe and Scandinavia.



From left: Gary, Kristin, Jimmy and Rudi



Gary Murphy, Tan Chau, Asia



Rudi Schreiner and Kristin Karst, Asia

“We are proud to represent a product and river cruise experience that is enjoyed by travellers of all ages. We are truly inclusive, not only in our product delivery and everything we include in our price, but also inclusive of all ages, ethnic backgrounds and family compositions.” – Gary Murphy

Front cover: AmaMagna sailing past Bratislava Castle, Slovakia

LEADING THE WAY

“Ama” means love – and we put love in everything we do. Family owned and operated, we pride ourselves on our passion for river cruising, unparalleled service, exquisite *La Chaîne des Rôtisseurs* dining, and our innovations, which range from staterooms with unique “Twin Balconies” to included shore excursions featuring active biking and hiking adventures to the AmaMagna, twice the width of traditional river cruise ships.

Since 2002, AmaWaterways has offered unforgettable river cruises aboard award-winning ships sailing legendary rivers through the heart of Europe, Asia and Africa. We do what we love every day, treating guests to journeys of a lifetime.

With the highest-rated ships in Europe according to the third edition of *Berlitz: River Cruising in Europe & the USA*, AmaWaterways has received countless honours and accolades, including the 2018 AFAR Award for “Best River Cruise Line,” as well as 2018 *Cruise Critic* Editors' Picks for “Best River Cruise Line for Active Cruisers.”

“We won’t even think of going anywhere else. AmaWaterways gets nothing but rave reviews from us.” – Calvin B., loyal guest

HIGHEST RATED SHIPS IN EUROPE

Berlitz rated 325 European and US river cruise ships using a grading system based on 500 points in five areas: hardware/facilities, accommodations, cuisine, service/hospitality and other onboard features. AmaWaterways earned six of the top ten spots, including the top three rated ships in Europe—AmaKristina, AmaViola and AmaStella—in the third edition of *Berlitz: River Cruising in Europe & USA* travel guide. Throughout all editions, AmaWaterways has consistently earned the number one rated ship.

Note: A number of new ships have joined our fleet since the Berlitz guide was published: AmaSiena, AmaLea, AmaMora, AmaDouro and AmaMagna.



Passau, Germany

“AmaWaterways spends considerably more on high-quality food ingredients and wine and hotel crew service training than any other river cruise company.” – Douglas Ward, *Berlitz River Cruising in Europe*



AmaKristina, Berlitz Number One Highest Rated Ship

AN UNPARALLELED RIVER CRUISE EXPERIENCE

Treat yourself to an unforgettable AmaWaterways river cruise as our extraordinary crew turns every mile you travel into your most cherished memory. The greatest luxury we offer is the peace of mind that your every need will be taken care of throughout your journey.

WHAT'S INCLUDED

- ◆ Elegantly appointed riverview staterooms and suites – most with signature Twin Balconies, French balconies or full balconies
- ◆ Luxurious suites include added enhancements, such as larger seating areas, expansive bathrooms and additional surprises
- ◆ Experienced Cruise Manager who accompanies you throughout your entire journey, both on your cruise and all your additional land programmes
- ◆ All meals on board, with complimentary unlimited wine, beer and soft drinks during lunch and dinner
- ◆ Sip & Sail cocktail hour with complimentary wine, beer and spirits
- ◆ Welcome Cocktail, Welcome Dinner, *La Chaîne des Rôtisseurs* Dinner, Captain's Cocktail and Gala Dinner
- ◆ Entertainment-On-Demand in all staterooms and suites with complimentary high-speed internet, movies, music and English-language TV stations
- ◆ Complimentary water always available
- ◆ Unlimited complimentary Wi-Fi on board
- ◆ Small guided group excursions with a variety of choices, including immersive Special Interest Tours, and hiking and biking adventures
- ◆ Complimentary bicycles and helmets, and Nordic walking sticks
- ◆ Distinctive onboard programmes, such as lectures, theme dinners, cooking demonstrations, music performances and afternoon/evening piano music
- ◆ Wellness activities and classes led by a professionally trained Wellness Host
- ◆ Expertly trained, all English-speaking staff

Note: Amenities may vary by region and ship.



Evening entertainment with local performers



Enjoy the views from your private balcony

“We feel perfectly confident in saying the only cruise line to go with is AmaWaterways. We really have not thought of doing anything else – and why would we? You shouldn’t have to work to relax.” – Sue D., valued guest



Small group guided hikes

EVERY ROOM WITH A VIEW – AND MOST WITH TWO

As you close the door on a day filled with enriching experiences, your spacious stateroom should offer you more than just a good night's sleep. That's why AmaWaterways has thoughtfully transformed your room into a floating sanctuary – and the ultimate home away from home.

When you embark on a river cruise, the views are everything. And there's nowhere better to experience the romance of Budapest illuminated at night while on the Danube, or the UNESCO-designated castle-laden Rhine, than from the comfort of your signature Twin Balcony stateroom, where both a French balcony and full outside balcony bring fresh air and postcard-worthy views.

YOUR RETREAT

- ◆ A place for everything with generous wardrobe and storage space, as well as an in-room safe
- ◆ Marble bathrooms with multi-jet shower, soothing bath and body products, cotton bathrobes, slippers and hairdryer
- ◆ Desk/dressing table and comfortable seating area
- ◆ Entertainment-On-Demand, featuring Hollywood's newest releases and a selection of classic movies, news, sports and satellite TV, as well as a large selection of music channels
- ◆ Complimentary water replenished daily
- ◆ On some Twin Balcony ships, as well as on the AmaMagna, you'll find staterooms and suites with connecting doors, as well as triple and quadruple accommodations, making river cruising more convenient for groups and families

THE SUITE LIFE

Discover the added luxury of travelling in a suite. From incredible benefits, such as a larger seating area and expansive bathrooms with a bathtub and shower, to enhanced personal space and unrivalled balcony views, the suites aboard our award-winning fleet offer a truly memorable experience.

“We love to watch sunsets and city life while having a glass of wine, sitting with the windows open so we can watch the lights of towns go by. This will always be our choice of stateroom.” – Barbara B., loyal past guest

THE ULTIMATE INDULGENCE

AMAMAGNA SUITES

More than 50% of the AmaMagna's accommodations are ultra-spacious suites with the majority measuring 33 sq. m. There are also six Grand Suites at 44 sq. m, and an indulgent Owner's Suite at 66 sq. m, complete with a large living area. Each suite features a full balcony, as well as a lovely seating area, bathrooms with walk-in showers and double sinks. The Grand Suites and Owner's Suites feature both a walk-in shower and bathtub.

Suite Benefits:

- ◆ Welcome gift, including complimentary bottle of champagne
- ◆ Mobile Wi-Fi device for use ashore

Also, you will find suites with connecting doors, as well as triple and quadruple accommodations, making river cruising more convenient for groups and families.



Grand Suite, AmaMagna



Grand Suite Bathroom, AmaMagna

A PALATE-PLEASING JOURNEY

As a member of the prestigious international culinary society *La Chaîne des Rôtisseurs*, AmaWaterways offers guests an unforgettable experience enhanced by daily hand-selected complimentary wine chosen by acclaimed European sommeliers.

Indulge in exquisite regionally-inspired cuisine lovingly prepared using only the freshest local and seasonal ingredients sourced from destinations visited ashore.

Bountiful breakfasts include omelettes made to order using free-range eggs, freshly baked pastries and bread, fresh fruit and cereals. Lunch tempts with an array of fresh salads, soups and sandwiches. Evenings offer casual elegance with delicious fillets of salmon, beef tenderloin, and peppers expertly sautéed and grilled. Starters and handmade desserts are artfully presented—while delicious vegetarian, low sodium and gluten-free choices are available.

“One night, we had planned to serve chicken confit for the Captain’s Gala but found local venison that was just so beautiful. So, we switched, and then I decided chestnuts would be a wonderful accompaniment and sent our Hotel Manager out to get fresh, local organic chestnuts.” – Executive Chef Daniel Tanase, AmaLea

COMPLIMENTARY BEVERAGES

Start the day off with freshly squeezed juices, sparkling wine, coffee and tea. Indulge in our Sip & Sail cocktail hour and savour unlimited wine, beer and soft drinks served with lunch and dinner.

A VARIETY OF DINING OPTIONS

AmaWaterways offers a variety of dining options, including early-riser breakfasts, light lunches in the main lounge and on the Sun Deck, and a selection of complimentary tapas throughout the day.

EXCLUSIVE DINING EXPERIENCES

Always leading the way in innovation, AmaWaterways provides guests with one-of-a-kind dining in which food is not merely sustenance—it’s an unforgettable experience.



THE CHEF’S TABLE

The only venue of its kind on the rivers, The Chef’s Table specialty restaurant offers a truly unique culinary experience at no extra charge. Watch as the chef chops, sears, drizzles and meticulously plates a multi-course tasting menu with professional finesse. The crux of this thrilling evening occurs as you raise your fork to your lips, delighting in the perfect balance of distinctive flavours—skillfully paired with hand-selected wines reflective of the places you visit—and you realise every bite tastes just as phenomenal as it looks.

LA CHAÎNE DES RÔTISSEURS

AmaWaterways and Co-founder & President, Rudi Schreiner, were inducted into *La Confrérie de la Chaîne des Rôtisseurs*, a prestigious international society for the culinary elite. Extensions of membership are by invitation only and are offered only to those possessing world-class culinary acumen. All of our ships in Europe are members. Our team of chefs is united by their desire to share their expert knowledge with you, a delectable tribute to our river cruise line being recognised for its award-winning dining.



DINING ALONG THE RHINE & MOSELLE

(Sample Menu)

Starters

- Beef carpaccio with roasted mushrooms and pesto
- Belgian endive with radicchio, rocket, glazed nuts and Camembert served with vinaigrette (v)
- Foie Gras pâte, walnut brioche and fig chutney

Soups

- Duck consommé with pancake roulade and vegetables
- Munster cheese velouté served with croutons (v)

Main Courses

- Fresh Sea Bass served with lime Hollandaise sauce and broccoli vegetable pearls
- “Rheinischer Sauerbraten”
- Red wine marinated beef in raisin sauce, red cabbage, broccoli and potato dumpling
- Creamy sweet potato and vegetable stew (v)

Desserts

- “German Griesflammerie”
- Semolina mousse and forest berry ragout
- Éclairs Framboise
- Cream-filled pastry with raspberries
- Belgian chocolate buffet along with regional cheeses and fruit

OUR WINE RECOMMENDATIONS

White

Vereinigte Hospitien Riesling

Country: Germany Area: Mosel-Saar-Ruwer Grape: Riesling

Red

Louis Eschenauer Bordeaux

Country: France Area: Bordeaux
Grape: Cabernet Sauvignon/Merlot

(v) Vegetarian

WINE CRUISES

Uncork local traditions and savour intense flavours during one of our more than 60 exclusive Wine Cruises. Offering enhanced epicurean experiences included in the price of your cruise, these thrilling wine-themed cruises sail through Austria's UNESCO-designated Wachau Valley; France's celebrated Bordeaux area and equally distinguished Côtes du Rhône region; Portugal's Douro Valley, the oldest demarcated wine region in the world; and Germany's breathtaking Rheingau, Franconia and Moselle regions.



Delight in the flavours of the region

And no matter which region inspires you most, you'll be accompanied by a Wine Host, a dedicated wine expert from a renowned winery, who will lead you through tantalising tastings, engaging discussions and a special food and wine pairing dinner, rounding out your palate-pleasing adventure.

"On our cruise in Bordeaux, we spent a couple of hours talking about flavours, pairings and acidity with the head chef. We were impressed by the level of care he had for ensuring our wine and his cuisine paired perfectly. It made for a truly magical wine pairing dinner on board."

– Ryan Levy, Wine Host

TASTE THE SWEET LIFE

Celebrate life's sweetest moments and tempt your increasingly refined palate with the delicious array of locally produced wines throughout your journey. Wines such as Moscatel de Favaio, Vinho Verde, Beaujolais, Reisling, Côtes du Rhône, Hermitage, Châteauneuf-du-Pape, Grüner Veltliner, Sauvignon Blanc, Pinot Blanc and Pinot d'Alsace will be among either your favourite varietals or flavours to which you will be introduced, depending on your itinerary.



PREMIER VINEYARDS & CELLAR TOURS

One of the most delightful aspects of Wine Cruises is visiting Europe's unique vineyards and wineries. Walk through France's Saint-Émilion and then visit the 14th-century Château de Montaigne, the former residence of French philosopher Michel de Montaigne. Or visit Würzburg, Germany's stunning UNESCO-designated Residenz Palace, home to a beautiful wine cellar. These are only a few of the amazing places you will experience.



AUTHENTIC ENCOUNTERS

Authentic encounters add to the rich tapestry of local culture, always making for memorable experiences. Walk alongside artisans and vintners through the same fields in which their ancestors toiled. Learn how best to pair decadent chocolate with wine; discover how olives transform into the Mediterranean's prized nectar, olive oil; or be tempted by everything from apricot jams and strudels to apricot brandy while in Austria's enchanting Wachau Valley.

EXPLORE THE WORLD YOUR WAY

Imagine yourself within a Monet masterpiece as you step into his lovely gardens at Giverny; or walking down the long aisle with Maria at St. Michael's Church in Mondsee where the wedding scene in *The Sound of Music* was captured on film. What about the thrill of visiting Braşov's multi-towered Bran Castle, former home of Vlad the Impaler—the inspiration for Bram Stoker's Dracula, as well as Dracula's birthplace, Sighișoara?

When travelling with AmaWaterways, you don't just pass through a destination—you experience it with all of your senses. Follow the routes of emperors and other legendary figures on creative and adventurous itineraries along timeless rivers, through inspiring countryside, historic capitals, fairytale towns and even out-of-the-way hotspots that locals favour. Carefully curated excursions showcase the rich diversity of each place you visit and all are hosted by the most experienced and knowledgeable English-speaking local guides and Cruise Managers who have a genuine passion for world history and a flair for bringing the past to life.

GET UP CLOSE

AmaWaterways makes it a point to place our guests in small groups. By doing this, you can connect more with your guide and your surroundings in an intimate setting with front-row views. And, because the size of the group is limited, you never have to wait in long lines.

SET YOUR OWN PACE

If you find relaxing excursions most appealing, join a more leisurely paced group, giving you ample time to linger in your favourite spots. And, for those who like to sleep longer in the morning, join the “Late Starter” group—because, after all, it is your holiday.



Bratislava, Slovakia



Small group excursions



Explore in leisurely paced groups

EXPERT GUIDANCE

AmaWaterways employs professionally trained Wellness Hosts whose job is to help you make the most out of your journey—from head to heart to toe.

WELLNESS HOSTS

Small group exercise classes, informational lectures and engaging discussions on relevant topics are all led on board by AmaWaterways' exceptional Wellness Hosts. Their ultimate desire is to see you achieve your goals, no matter how big or small, and to make sure you have fun while nourishing your mind, body and spirit.

WELLNESS ESSENTIALS

Each ship features a fitness room furnished with an array of exercise equipment such as treadmills, bikes and free weights (varies by ship), allowing you to work on everything from your cardiovascular fitness to strength training. Plus, the Sun Deck walking track provides the perfect place to not only stay fit, but to take in the beauty of the ever-changing scenery.

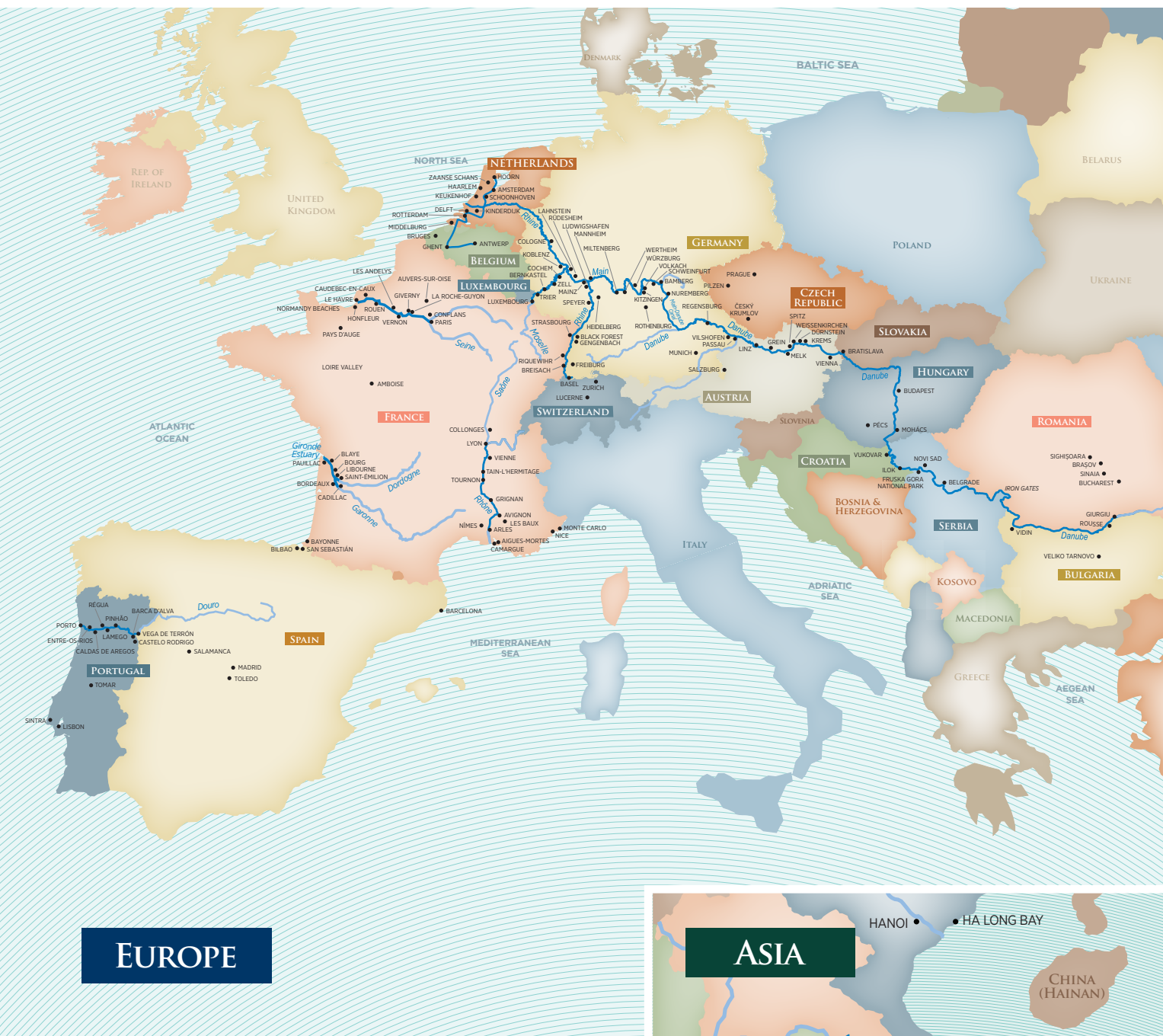
Note: Wellness Hosts available fleetwide in Europe (except Portugal).



Exercise on the Sun Deck



Spinning with a view, AmaMagna



DISCOVER OUR WORLD ONE RIVER AT A TIME

14 Rivers & Waterways
23 Countries
33 Itineraries

TULIP TIME

7 NIGHTS | ROUNDTrip AMSTERDAM, THE NETHERLANDS



DAILY PROGRAMME

DAY	DESTINATION	ACTIVITIES
1	Amsterdam, The Netherlands	EMBARKATION
2	Amsterdam, Hoorn, The Netherlands	The IJsselmeer scenic cruising Tulips and bulb fields OR Hoorn walking tour and Dutch East India Museum OR Dutch countryside bike tour
3	Delta, Middelburg, The Netherlands	Scenic cruising Middelburg walking tour OR Delta Works visit OR Middelburg bike ride
4	Ghent, Belgium	Highlights of Ghent and Bruges OR Ghent walking tour and free time OR Belgian chocolate workshop OR Full-day Bruges and Church of Our Lady
5	Antwerp, Belgium	Walking tour and cathedral visit OR Rubens House OR Antwerp bike tour Belgian chocolate, beer and waffle tasting OR Floralia Flower Show
6	Rotterdam, The Netherlands Kinderdijk, The Netherlands Schoonhoven, The Netherlands	Rotterdam walking tour and Tastes of Rotterdam OR Delfshaven OR Rotterdam architectural bike tour OR "The Best of Delft" excursion Kinderdijk UNESCO Windmills OR Kinderdijk bike tour Free evening
7	Amsterdam	Keukenhof Gardens excursion Amsterdam canal cruise
8	Amsterdam	DISSEMBARKATION

For full details please visit www.amawaterways.eu

DATES & FARES

SAVE UP TO €1,200pp
BOOK BY 31 DECEMBER 2019*

EMBARKATION DATE	EMBARKATION CITY	SHIP NAME	7-NIGHT CRUISE (CAT. E)
Mar 20	Amsterdam	AmaSerena	€2,407
Mar 22	Amsterdam	AmaPrima	€2,491
Mar 23	Amsterdam	AmaKristina	€2,491
Mar 27	Amsterdam	AmaSerena	€2,574
Mar 29	Amsterdam	AmaPrima	€2,574
Mar 30	Amsterdam	AmaKristina	€2,574
Apr 03	Amsterdam	AmaSerena	€2,657
Apr 05	Amsterdam	AmaPrima	€2,657
Apr 06	Amsterdam	AmaKristina	€2,657
Apr 10	Amsterdam	AmaSerena	€2,741
Apr 12	Amsterdam	AmaPrima	€2,741
Apr 13	Amsterdam	AmaKristina	€2,741
Apr 17	Amsterdam	AmaSerena	€2,824
Apr 19	Amsterdam	AmaPrima	€2,824
Apr 20	Amsterdam	AmaKristina	€2,907
Apr 24	Amsterdam	AmaSerena	€2,907
Apr 26	Amsterdam	AmaPrima	€2,991
May 01	Amsterdam	AmaSerena	€2,991

Cruise Fares: Fares are per person, based on double occupancy of a Cat. E deluxe outside stateroom with window.

To upgrade to a higher category, please add the following per person:
AMAKRISTINA, AMAPRIMA & AMASERENA

CAT.	DECK	STATEROOM	SQ. M	ADD'L
D	Piano	Window	15	€249
CB	Violin	French Balcony	14	€583
CA/C	Violin & Cello	French Balcony	16	€833
BB	Cello	French/Outside Balcony	20	€1,249
BA	Violin	French/Outside Balcony	20	€1,416
AB	Cello	French/Outside Balcony	22	€1,583
AA	Violin	French/Outside Balcony	22	€1,749
AA+	Violin	French/Outside Balcony	27	€2,249
Suite	Violin	French/Outside Balcony	33	€2,833

Single Supplement Cruise: Category E and D 25% of per person twin fare; Category CB, CA/C, BB, BA, AB and AA 50% of per person twin fare; AA+ and Suite 100% of per person twin fare. Single Supplements apply to all Land Programmes & Hotel Nights. Please call for details.

Deck Plans: See pages 170 - 177 of our 2020 Europe, Asia & Africa Brochure.
Airport Transfers: Amsterdam Airport Schiphol to Ship - €25 per person. Ship to Amsterdam Airport Schiphol - €25 per person.

Land Programmes: Please call for details on pre- and post-cruise land programmes.
Extra hotel nights are available: Please call for pricing and availability.

Note: Itinerary is subject to change. For the most up-to-date information, please refer to the itinerary schedule provided with your final documents.

*Book by 31st December 2019 and save up to €1,200 per person on selected sailings. Fares shown do not include savings. Visit www.amawaterways.eu or contact your Travel Agent for full details.



Amsterdam's famous canals, The Netherlands



Keukenhof Gardens, The Netherlands

CAPTIVATING RHINE

7 NIGHTS | AMSTERDAM, THE NETHERLANDS TO BASEL, SWITZERLAND



DAILY PROGRAMME

DAY	DESTINATION	ACTIVITIES
1	Amsterdam, The Netherlands	EMBARKATION
2	Amsterdam	Canal cruise tour Scenic cruising out of Amsterdam
3	Cologne, Germany	"Holy City" walking tour and cathedral visit OR Cologne bike tour OR Kölsch beer tasting
4	Rhine Gorge, Rudesheim, Germany	Castles along the Rhine scenic cruising Rudesheim wine tasting OR Gondola ride OR Schloss Johannisberg bike tour OR Vineyard hike Siegfried's Mechanical Musical Instrument Museum OR Rudesheimer coffee
5	Ludwigshafen, Germany	"Romantic Heidelberg" excursion OR Heidelberg Philosopher's Path hike OR "Secrets of Speyer" tour
6	Strasbourg, France	"The Gem of Alsace" tour OR Strasbourg bike tour
7	Breisach, Germany	Riquewihr walking tour OR Freiburg excursion OR Breisach wine country bike tour OR Black Forest hike
8	Basel, Switzerland	DISSEMBARKATION

For full details please visit www.amawaterways.eu

Cologne's magnificent cathedral, Germany

SAVE UP TO €1,200p
BOOK BY 31 DECEMBER 2019*

DATES & FARES

EMBARKATION DATE	EMBARKATION CITY	SHIP NAME	7-NIGHT CRUISE (CAT. E)
Mar 15	Amsterdam	AmaMora	€2,407
Mar 19	Amsterdam	AmaDante	€2,407
Mar 23	Amsterdam	AmaStella	€2,491
Mar 29	Amsterdam	AmaMora	€2,574
Apr 06	Amsterdam	AmaStella	€2,657
Apr 12	Amsterdam	AmaMora	€2,741
Apr 20	Amsterdam	AmaStella	€2,907
Apr 26	Amsterdam	AmaMora	€2,991
Apr 27	Amsterdam	AmaKristina	€2,991
May 04	Amsterdam	AmaStella	€3,074
May 10	Amsterdam	AmaMora	€3,157
May 11	Amsterdam	AmaKristina	€3,157
May 18	Amsterdam	AmaStella	€3,241
May 24	Amsterdam	AmaMora	€3,241
May 25	Amsterdam	AmaKristina	€3,241
Jun 01	Amsterdam	AmaStella	€3,241
Jun 07	Amsterdam	AmaMora	€3,241
Jun 08	Amsterdam	AmaKristina	€3,241
Jun 15	Amsterdam	AmaStella	€3,241
Jun 21	Amsterdam	AmaMora	€3,241
Jun 22	Amsterdam	AmaKristina	€3,241
Jun 29	Amsterdam	AmaStella	€3,241
Jul 05	Amsterdam	AmaMora	€3,241
Jul 06	Amsterdam	AmaKristina	€3,241
Jul 13	Amsterdam	AmaStella	€3,241
Jul 19	Amsterdam	AmaMora	€3,241
Jul 20	Amsterdam	AmaKristina	€3,241
Jul 27	Amsterdam	AmaStella	€3,241
Aug 02	Amsterdam	AmaMora	€3,241
Aug 03	Amsterdam	AmaKristina	€3,241
Aug 10	Amsterdam	AmaStella	€3,241
Aug 16	Amsterdam	AmaMora	€3,241
Aug 17	Amsterdam	AmaKristina	€3,241
Aug 24	Amsterdam	AmaStella	€3,324
Aug 30	Amsterdam	AmaMora	€3,407
Aug 31	Amsterdam	AmaKristina	€3,407
Sep 07	Amsterdam	AmaStella	€3,491
Sep 13	Amsterdam	AmaMora	€3,491
Sep 14	Amsterdam	AmaKristina	€3,491
Sep 21	Amsterdam	AmaStella	€3,491
Sep 27	Amsterdam	AmaMora	€3,491
Sep 28	Amsterdam	AmaKristina	€3,491
Oct 05	Amsterdam	AmaStella	€3,491
Oct 11	Amsterdam	AmaMora	€3,324
Oct 12	Amsterdam	AmaKristina	€3,324
Oct 19	Amsterdam	AmaStella	€3,241
Oct 25	Amsterdam	AmaMora	€3,157
Oct 26	Amsterdam	AmaKristina	€3,157
Oct 29	Amsterdam	AmaDante	€3,074
Nov 02	Amsterdam	AmaStella	€3,074
Nov 08	Amsterdam	AmaMora	€2,907
Nov 09	Amsterdam	AmaKristina	€2,907
Nov 16	Amsterdam	AmaStella	€2,824
Nov 18	Amsterdam	AmaSiena	€2,741

Wine Cruise

Cruise Fares: Fares are per person, based on double occupancy of a Cat. E deluxe outside stateroom with window.**To upgrade to a higher category, please add the following per person:****AMAKRISTINA, AMAMORA, AMSIENA & AMASTELLA**

CAT.	DECK	STATEROOM	SQ. M	ADD'L
D	Piano	Window	15	€249
CB	Violin	French Balcony	14	€583
CA/C	Violin & Cello	French Balcony	16	€833
BB	Cello	French/Outside Balcony	20	€1,249
BA	Violin	French/Outside Balcony	20	€1,416
AB	Cello	French/Outside Balcony	22	€1,583
AA	Violin	French/Outside Balcony	22	€1,749
AA+	Violin	French/Outside Balcony	27	€2,249
Suite	Violin	French/Outside Balcony	33	€2,833

AMADANTE

CAT.	DECK	STATEROOM	SQ. M	ADD'L
D	Piano	Window	16	€249
C	Violin & Cello	French Balcony	16	€833
B	Violin & Cello	French Balcony	16	€999
A	Violin	French Balcony	16	€1,083
A+	Violin	French Balcony	21	€1,916
Suite	Violin	French Balcony	24	€2,083

Single Supplement Cruise: Category E and D 25% of per person twin fare; Category CB, CA/C, B, BB, BA, A, AB and AA 50% of per person twin fare; A+, AA+ and Suite 100% of per person twin fare. Single Supplements apply to all Land Programmes & Hotel Nights. Please call for details.**Deck Plans:** See pages 170 - 177 of our 2020 Europe, Asia & Africa Brochure.**Airport Transfers:** Amsterdam Airport Schiphol to Ship - €25 per person.

Ship to EuroAirport Basel Mulhouse Freiburg - €50 per person.

Land Programmes: Please call for details on pre- and post-cruise land programmes.**Extra hotel nights are available:** Please call for pricing and availability.**Note:** Itinerary is subject to change. For the most up-to-date information, please refer to the itinerary schedule provided with your final documents.*Book by 31st December 2019 and save up to €1,200 per person on selected sailings. Fares shown do not include savings. Visit www.amawaterways.eu or contact your Travel Agent for full details.

ENCHANTING RHINE

7 NIGHTS | BASEL, SWITZERLAND TO AMSTERDAM, THE NETHERLANDS



DAILY PROGRAMME

DAY	DESTINATION	ACTIVITIES
1	Basel, Switzerland	☀ EMBARKATION
2	Breisach, Germany	Riquewihr excursion OR Freiburg excursion OR Breisach wine country bike tour OR Black Forest hike
3	Strasbourg, France	"The Gem of Alsace" tour OR Strasbourg bike tour
4	Ludwigshafen, Germany	"Romantic Heidelberg" excursion OR Heidelberg Philosopher's Path hike OR "Secrets of Speyer" tour
	Rudesheim, Germany	Siegfried's Mechanical Musical Instrument Museum OR Rudesheimer coffee
5	Rudesheim	Gondola ride and wine tasting OR Schloss Johannisberg bike tour OR Vineyard hike
	Rhine Gorge	Castles along the Rhine scenic cruising
	Lahnstein, Germany	Unique Lahneck Castle visit
6	Cologne, Germany	"Holy City" walking tour and cathedral visit OR Kolsch Beer tasting OR Cologne bike tour
7	Amsterdam, The Netherlands	Canal cruise tour OR Jordaan walking tour*
8	Amsterdam	⚓ DISEMBARKATION

* Depending on docking location, Jordaan walking tour may not operate; therefore, an alternative tour will operate instead.

For full details please visit www.amawaterways.eu



Neckar River, Heidelberg, Germany

RHINE

SAVE UP TO €1,200pp
BOOK BY 31 DECEMBER 2019*

DATES & FARES

EMBARKATION DATE	EMBARKATION CITY	SHIP NAME	7-NIGHT CRUISE (CAT. E)
Mar 22	Basel	AmaMora	€2,491
Mar 30	Basel	AmaStella	€2,574
Apr 05	Basel	AmaMora	€2,657
Apr 13	Basel	AmaStella	€2,741
Apr 19	Basel	AmaMora	€2,824
Apr 27	Basel	AmaStella	€2,991
May 03	Basel	AmaMora	€3,074
May 04	Basel	AmaKristina	€3,074
May 11	Basel	AmaStella	€3,157
May 18	Basel	AmaKristina	€3,241
May 25	Basel	AmaStella	€3,241
May 31	Basel	AmaMora	€3,241
Jun 01	Basel	AmaKristina	€3,241
Jun 08	Basel	AmaStella	€3,241
Jun 15	Basel	AmaKristina	€3,241
Jun 22	Basel	AmaStella	€3,241
Jun 29	Basel	AmaKristina	€3,241
Jul 06	Basel	AmaStella	€3,241
Jul 13	Basel	AmaKristina	€3,241
Jul 20	Basel	AmaStella	€3,241
Jul 27	Basel	AmaKristina	€3,241
Aug 03	Basel	AmaStella	€3,241
Aug 10	Basel	AmaKristina	€3,241
Aug 17	Basel	AmaStella	€3,241
Aug 23	Basel	AmaMora	€3,324
Aug 24	Basel	AmaKristina	€3,324
Aug 31	Basel	AmaStella	€3,407
Sep 07	Basel	AmaKristina	€3,491
Sep 14	Basel	AmaStella	€3,491
Sep 21	Basel	AmaKristina	€3,491
Sep 28	Basel	AmaStella	€3,491
Oct 05	Basel	AmaKristina	€3,407
Oct 12	Basel	AmaStella	€3,324
Oct 18	Basel	AmaMora	€3,241
Oct 19	Basel	AmaKristina	€3,241
Oct 22	Basel	AmaDante	€3,241
Oct 26	Basel	AmaStella	€3,157
Nov 01	Basel	AmaMora	€3,074
Nov 02	Basel	AmaKristina	€3,074
Nov 05	Basel	AmaDante	€3,074
Nov 09	Basel	AmaStella	€2,907
Nov 11	Basel	AmaSiena	€2,907
Nov 15	Basel	AmaMora	€2,824
Nov 16	Basel	AmaKristina	€2,824
Dec 23	Basel	AmaSiena	€2,907
Dec 27	Basel	AmaMora	€2,907
Dec 28	Basel	AmaKristina	€2,907

🍷 Wine Cruise 🥂 New Year's Cruise

Cruise Fares: Fares are per person, based on double occupancy of a Cat. E deluxe outside stateroom with window.

To upgrade to a higher category, please add the following per person:

AMAKRISTINA, AMAMORA, AMASIANA, AMASTELLA

CAT.	DECK	STATEROOM	SQ. M	ADD'L
D	Piano	Window	15	€249
CB	Violin	French Balcony	14	€583
CA	Violin & Cello	French Balcony	16	€833
BB	Cello	French/Outside Balcony	20	€1,249
BA	Violin	French/Outside Balcony	20	€1,416
AB	Cello	French/Outside Balcony	22	€1,583
AA	Violin	French/Outside Balcony	22	€1,749
Suite	Violin	French/Outside Balcony	33	€2,833

AMADANTE

CAT.	DECK	STATEROOM	SQ. M	ADD'L
D	Piano	Window	16	€249
C	Violin & Cello	French Balcony	16	€833
B	Violin & Cello	French Balcony	16	€999
A	Violin	French Balcony	16	€1,083
A+	Violin	French Balcony	21	€1,916
Suite	Violin	French Balcony	24	€2,083

Single Supplement Cruise: Category E and D 25% of per person twin fare; Category CB, CA/C, B, BB, BA, A, AB and AA 50% of per person twin fare; A+, AA+ and Suite 100% of per person twin fare. Single Supplements apply to all Land Programmes & Hotel Nights. Please call for details.

Deck Plans: See pages 170 - 177 of our 2020 Europe, Asia & Africa Brochure.

Airport Transfers: EuroAirport Basel Mulhouse Freiburg to Ship - €50 per person. Ship to Amsterdam Airport Schiphol - €25 per person.

Land Programmes: Please call for details on pre- and post-cruise land programmes.

Extra hotel nights are available: Please call for prices & availability.

Note: Itinerary is subject to change. For the most up-to-date information, please refer to the itinerary schedule provided with your final documents.

*Book by 31st December 2019 and save up to €1,200 per person on selected sailings. Fares shown do not include savings. Visit www.amawaterways.eu or contact your Travel Agent for full details.

EUROPE'S RIVERS & CASTLES

7 NIGHTS | NUREMBERG, GERMANY TO LUXEMBOURG CITY, LUXEMBOURG
(OR REVERSE)

DAILY PROGRAMME

DAY	DESTINATION	ACTIVITIES
1	Nuremberg, Germany	☀ EMBARKATION
2	Bamberg, Germany	UNESCO city walking tour and smoked beer tasting
	Volkach, Germany	Free time
3	Würzburg, Germany	City tour OR Full-day Rothenburg OR Residenz Palace visit
4	Wertheim, Germany	Walking tour OR Main River bike tour OR Pretzel bakery visit and tasting OR Castle hike
5	Rüdesheim, Germany	Siegfried's Mechanical Musical Instrument Museum OR Gondola ride and wine tasting OR Vineyard hike
	Rhine Gorge	Castles along the Rhine scenic cruising Unique
	Lahnstein, Germany	Lahneck Castle visit
6	Cochem, Germany	Reichsburg Castle and walking tour OR Cochem Mustard Mill tour OR Moselle bike tour OR Reichsburg Castle hike
	Zell, Germany	Exclusive wine festival celebration
7	Trier, Germany	"Rome of the North" tour OR "Ancient tales of the Porta Nigra" OR Petrisberg hike OR Trier bike tour
8	Luxembourg City (Wasserbilig), Luxembourg	⚓ DISEMBARKATION

For full details please visit www.amawaterways.euSAVE UP TO €1,200pp
BOOK BY 31 DECEMBER 2019*

DATES & FARES

EMBARKATION DATE	EMBARKATION CITY	SHIP NAME	7-NIGHT CRUISE (CAT. E)
Apr 16	Luxembourg City	AmaDante	€2,824
Apr 23	Nuremberg	AmaDante	€2,907
May 28	Luxembourg City	AmaDante	€3,241
Jun 04	Nuremberg	AmaDante	€3,241
Jul 09	Luxembourg City	AmaDante	€3,241
Jul 16	Nuremberg	AmaDante	€3,241
Aug 19	Luxembourg City	AmaSiena	€3,241
Aug 20	Luxembourg City	AmaDante	€3,324
Aug 26	Nuremberg	AmaSiena	€3,407
Aug 27	Nuremberg	AmaDante	€3,407
Oct 01	Luxembourg City	AmaDante	€3,491
Oct 08	Nuremberg	AmaDante	€3,407
Oct 21	Luxembourg City	AmaSiena	€3,241
Oct 28	Nuremberg	AmaSiena	€3,157

🍷 Wine Cruise

Cruise Fares: Fares are per person, based on double occupancy of a Cat. E deluxe outside stateroom with window.**To upgrade to a higher category, please add the following per person:**

AMASIANA

CAT.	DECK	STATEROOM	SQ. M	ADD'L
D	Piano	Window	15	€249
CB	Violin	French Balcony	14	€583
CA	Violin & Cello	French Balcony	16	€833
BB	Cello	French/Outside Balcony	20	€1,249
BA	Violin	French/Outside Balcony	20	€1,416
AB	Cello	French/Outside Balcony	22	€1,583
AA	Violin	French/Outside Balcony	22	€1,749
Suite	Violin	French/Outside Balcony	33	€2,833

AMADANTE

CAT.	DECK	STATEROOM	SQ. M	ADD'L
D	Piano	Window	16	€249
C	Violin & Cello	French Balcony	16	€833
B	Violin & Cello	French Balcony	16	€999
A	Violin	French Balcony	16	€1,083
A+	Violin	French Balcony	21	€1,916
Suite	Violin	French Balcony	24	€2,083

Single Supplement Cruise: Category E and D 25% of per person twin fare; Category CB, CA/C, B, BB, BA, A, AB and AA 50% of per person twin fare; A+, AA+ and Suite 100% of per person twin fare. Single Supplements apply to all Land Programmes & Hotel Nights. Please call for details.**Deck Plans:** See pages 170 - 177 of our 2020 Europe, Asia & Africa Brochure.**Airport Transfers:** Luxembourg Airport to Ship (or reverse) - €38 per person
Ship to Albrecht Dürer Airport Nuremberg - €29 per person or
Ship to Munich Airport - €111 per person.**Land Programmes:** Please call for details on pre- and post-cruise land programmes.**Extra hotel nights are available:** Please call for prices & availability.**Note:** Itinerary is subject to change and can be booked as cruise only. For the most up-to-date information, please refer to the itinerary schedule provided with your final documents.*Book by 31st December 2019 and save up to €1,200 per person on selected sailings. Fares shown do not include savings. Visit www.amawaterways.eu or contact your Travel Agent for full details.

Cochem, Germany

MEDIEVAL TREASURES

7 NIGHTS | BASEL, SWITZERLAND TO NUREMBERG, GERMANY



DAILY PROGRAMME

DAY	DESTINATION	ACTIVITIES
1	Basel, Switzerland	☼ EMBARKATION
2	Strasbourg, France	"The Gem of the Alsace" tour OR Strasbourg bike tour
3	Ludwigshafen, Germany	Mannheim Baroque Palace OR "Secrets of Speyer" tour OR Speyer Technical Museum
	Rudesheim, Germany	Wine tasting
4	Rudesheim	Siegfried's Mechanical Musical Instrument Museum OR Gondola ride OR Vineyard hike
5	Miltenberg, Germany	"The Pearl of the Main" walking tour OR Miltenberg Castle hike OR Miltenberg to Wertheim bike tour OR Flavours of Miltenberg
	Wertheim, Germany	Walking tour OR Pretzel bakery visit and tasting OR Castle Hill hike
6	Kitzingen, Germany	Würzburg walking tour and Residenz Palace OR Full-day Rothenburg OR Kitzingen to Volkach bike tour
	Volkach, Germany	Walking tour Exclusive wine festival celebration
7	Bamberg, Germany	UNESCO city walking tour and smoked beer tasting OR Bamberg bike tour OR Bamberg specialties tasting
8	Nuremberg, Germany	⚓ DISEMBARKATION

For full details please visit www.amawaterways.eu

SAVE UP TO €1,200pp
BOOK BY 31 DECEMBER 2019*

DATES & FARES

EMBARKATION DATE	EMBARKATION CITY	SHIP NAME	7-NIGHT CRUISE (CAT. E)
May 07	Basel	AmaDante	€3,074
Jun 18	Basel	AmaDante	€3,241
Jul 30	Basel	AmaDante	€3,241
Sep 09	Basel	AmaSiena	€3,491
Sep 10	Basel	AmaDante	€3,491

Wine Cruise

Cruise Fares: Fares are per person, based on double occupancy of a Cat. E deluxe outside stateroom with window.

To upgrade to a higher category, please add the following per person:

AMASIANA

CAT.	DECK	STATEROOM	SQ. M	ADD'L
D	Piano	Window	15	€249
CB	Violin	French Balcony	14	€583
CA	Violin & Cello	French Balcony	16	€833
BB	Cello	French/Outside Balcony	20	€1,249
BA	Violin	French/Outside Balcony	20	€1,416
AB	Cello	French/Outside Balcony	22	€1,583
AA	Violin	French/Outside Balcony	22	€1,749
Suite	Violin	French/Outside Balcony	33	€2,833

AMADANTE

CAT.	DECK	STATEROOM	SQ. M	ADD'L
D	Piano	Window	16	€249
C	Violin & Cello	French Balcony	16	€833
B	Violin & Cello	French Balcony	16	€999
A	Violin	French Balcony	16	€1,083
A+	Violin	French Balcony	21	€1,916
Suite	Violin	French Balcony	24	€2,083

Single Supplement Cruise: Category E and D 25% of per person twin fare; Category CB, CA/C, B, BB, BA, A, AB and AA 50% of per person twin fare; A+, AA+ and Suite 100% of per person twin fare. Single Supplements apply to all Land Programmes & Hotel Nights. Please call for details.

Deck Plans: See pages 170 - 177 of our 2020 Europe, Asia & Africa Brochure.

Airport Transfers: EuroAirport Basel Mulhouse Freiburg to Ship - €50 per person. Ship to Albrecht Dürer Airport Nuremberg - €29 per person or Ship to Munich Airport - €111 per person.

Land Programmes: Please call for details on pre- and post-cruise land programmes.

Extra hotel nights are available: Please call for prices & availability.

Note: Itinerary is subject to change. For the most up-to-date information, please refer to the itinerary schedule provided with your final documents.

*Book by 31st December 2019 and save up to €1,200 per person on selected sailings. Fares shown do not include savings. Visit www.amawaterways.eu or contact your Travel Agent for full details.



Gondola ride, Rudesheim, Germany



Colourful Strasbourg, France

TREASURES OF THE MAIN & RHINE

7 NIGHTS | NUREMBERG, GERMANY TO AMSTERDAM, THE NETHERLANDS



DAILY PROGRAMME

DAY	DESTINATION	ACTIVITIES
1	Nuremberg, Germany	☀ EMBARKATION
2	Nuremberg, Bamberg, Germany	Cruise Main-Danube Canal Walking tour and smoked beer tasting OR Bamberg bike tour OR Bamberg specialties tasting
	Volkach, Germany	Free evening
3	Würzburg, Germany	City tour OR Residenz Palace tour OR Rothenburg excursion OR Marienberg Fortress hike
4	Wertheim, Germany	Walking tour OR Main River bike tour OR Pretzel bakery visit and tasting
5	Rüdesheim, Germany	Wine tasting OR Gondola ride OR Rheingau bike tour OR Vineyard hike
	Rhine Gorge, Lahnstein, Germany	Castles along the Rhine scenic cruising Unique Lahneck Castle visit
6	Cologne, Germany	"Holy City" walking tour and cathedral visit OR Cologne bike tour OR Kölsch beer tasting
7	Amsterdam, The Netherlands	Canal cruise
8	Amsterdam	⚓ DISEMBARKATION

For full details please visit www.amawaterways.eu



Würzburg, Germany

SAVE UP TO €1,200pp
BOOK BY 31 DECEMBER 2019*

DATES & FARES

EMBARKATION DATE	EMBARKATION CITY	SHIP NAME	7-NIGHT CRUISE (CAT. E)
May 14	Nuremberg	AmaDante	€3,241
Jun 25	Nuremberg	AmaDante	€3,241
Aug 06	Nuremberg	AmaDante	€3,241
Sep 16	Nuremberg	AmaSiena	€3,491
Sep 17	Nuremberg	AmaDante	€3,491

Wine Cruise

Cruise Fares: Fares are per person, based on double occupancy of a Cat. E deluxe outside stateroom with window.

To upgrade to a higher category, please add the following per person:

AMASIANA

CAT.	DECK	STATEROOM	SQ. M	ADD'L
D	Piano	Window	15	€249
CB	Violin	French Balcony	14	€583
CA	Violin & Cello	French Balcony	16	€833
BB	Cello	French/Outside Balcony	20	€1,249
BA	Violin	French/Outside Balcony	20	€1,416
AB	Cello	French/Outside Balcony	22	€1,583
AA	Violin	French/Outside Balcony	22	€1,749
Suite	Violin	French/Outside Balcony	33	€2,833

AMADANTE

CAT.	DECK	STATEROOM	SQ. M	ADD'L
D	Piano	Window	16	€249
C	Violin & Cello	French Balcony	16	€833
B	Violin & Cello	French Balcony	16	€999
A	Violin	French Balcony	16	€1,083
A+	Violin	French Balcony	21	€1,916
Suite	Violin	French Balcony	24	€2,083

Single Supplement Cruise: Category E and D 25% of per person twin fare; Category CB, CA/C, B, BB, BA, A, AB and AA 50% of per person twin fare; A+, AA+ and Suite 100% of per person twin fare. Single Supplements apply to all Land Programmes & Hotel Nights. Please call for details.

Deck Plans: See pages 170 - 177 of our 2020 Europe, Asia & Africa Brochure.

Airport Transfers: Albrecht Dürer Airport Nuremberg to Ship - €29 per person or Munich Airport to Ship - €111 per person. Ship to Amsterdam Airport Schiphol - €25 per person.

Land Programmes: Please call for details on pre- and post-cruise land programmes.

Extra hotel nights are available: Please call for prices & availability.

Note: Itinerary is subject to change. For the most up-to-date information, please refer to the itinerary schedule provided with your final documents.

*Book by 31st December 2019 and save up to €1,200 per person on selected sailings. Fares shown do not include savings. Visit www.amawaterways.eu or contact your Travel Agent for full details.



Lahneck Castle, Lahnstein, Germany



Kölsch beer tasting, Cologne, Germany

VINEYARDS OF THE RHINE & MOSELLE

7 NIGHTS | AMSTERDAM, THE NETHERLANDS TO LUXEMBOURG CITY, LUXEMBOURG (OR REVERSE)



DAILY PROGRAMME

DAY	DESTINATION	ACTIVITIES
1	Amsterdam, The Netherlands	EMBARKATION
2	Amsterdam	Canal cruise tour
3	Cologne, Germany	"Holy City" walking tour and cathedral visit OR Cologne bike tour OR Kölsch beer tasting
4	Rhine Gorge, Rüdesheim, Germany	Castles along the Rhine scenic cruising Gondola ride and wine tasting OR Schloss Johannisberg bike tour OR Vineyard hike Siegfried's Mechanical Musical Instrument Museum OR Rüdesheimer coffee
5	Mainz, Germany	City tour with Chagall windows OR Mainz bike tour OR Heidelberg excursion
	Lahnstein, Germany	Unique Lahneck Castle visit
6	Moselle Valley, Cochem, Germany	Scenic cruising Reichsburg Castle and walking tour OR Cochem Mustard Mill tour OR Reichsburg castle hike OR Cochem bike tour
7	Bernkastel, Germany	Walking tour and wine tasting OR Moselle bike tour OR Landshut Castle hike
8	Luxembourg City (Wasserbillig), Luxembourg	DISEMBARKATION

For full details please visit www.amawaterways.eu



Iconic Moselle River Valley vineyards, Germany

SAVE UP TO €1,200pp
BOOK BY 31 DECEMBER 2019*

DATES & FARES

EMBARKATION DATE	EMBARKATION CITY	SHIP NAME	7-NIGHT CRUISE (CAT. E)
Apr 02	Luxembourg City	AmaDante	€2,657
Apr 09	Amsterdam	AmaDante	€2,741
May 21	Amsterdam	AmaDante	€3,241
Jul 02	Amsterdam	AmaDante	€3,241
Aug 12	Amsterdam	AmaSiena	€3,241
Aug 13	Amsterdam	AmaDante	€3,241
Sep 24	Amsterdam	AmaDante	€3,491
Oct 14	Amsterdam	AmaSiena	€3,324

Wine Cruise

Cruise Fares: Fares are per person, based on double occupancy of a Cat. E deluxe outside stateroom with window.

To upgrade to a higher category, please add the following per person:

AMASIANA

CAT.	DECK	STATEROOM	SQ. M	ADD'L
D	Piano	Window	15	€249
CB	Violin	French Balcony	14	€583
CA	Violin & Cello	French Balcony	16	€833
BB	Cello	French/Outside Balcony	20	€1,249
BA	Violin	French/Outside Balcony	20	€1,416
AB	Cello	French/Outside Balcony	22	€1,583
AA	Violin	French/Outside Balcony	22	€1,749
Suite	Violin	French/Outside Balcony	33	€2,833

AMADANTE

CAT.	DECK	STATEROOM	SQ. M	ADD'L
D	Piano	Window	16	€249
C	Violin & Cello	French Balcony	16	€833
B	Violin & Cello	French Balcony	16	€999
A	Violin	French Balcony	16	€1,083
A+	Violin	French Balcony	21	€1,916
Suite	Violin	French Balcony	24	€2,083

Single Supplement Cruise: Category E and D 25% of per person twin fare; Category CB, CA/C, B, BB, BA, A, AB and AA 50% of per person twin fare; A+, AA+ and Suite 100% of per person twin fare. Single Supplements apply to all Land Programmes & Hotel Nights. Please call for details.

Deck Plans: See pages 170 - 177 of our 2020 Europe, Asia & Africa Brochure.

Airport Transfers: Amsterdam Airport Schiphol to Ship (or reverse) - €25 per person. Ship to Luxembourg Airport (or reverse) - €38 per person.

Land Programmes: Please call for details on pre- and post-cruise land programmes.

Extra hotel nights are available: Please call for prices & availability.

Note: Itinerary is subject to change. For the most up-to-date information, please refer to the itinerary schedule provided with your final documents.

*Book by 31st December 2019 and save up to €1,200 per person on selected sailings. Fares shown do not include savings. Visit www.amawaterways.eu or contact your Travel Agent for full details.



Charming Cochem, Germany

RHINE & MOSELLE SPLENDOURS

7 NIGHTS | LUXEMBOURG CITY, LUXEMBOURG TO BASEL, SWITZERLAND
(OR REVERSE)



DAILY PROGRAMME

DAY	DESTINATION	ACTIVITIES
1	Luxembourg City (Wasserbillig), Luxembourg	EMBARKATION
2	Trier, Germany Berncastel, Germany	"Rome of the North" tour OR Petrisberg Hill hike Walking tour and wine tasting OR Landshut Castle hike
3	Cochem, Germany Moselle Lahnstein, Germany	Reichsburg Castle and walking tour OR Reichsburg Castle hike OR Bundesbank Bunker vault tour OR Cochem bike tour Scenic cruising Unique Lahneck Castle visit
4	Rhine Gorge Rudesheim, Germany	Castles along the Rhine scenic cruising Gondola ride and wine tasting OR Vineyard hike OR Schloss Johannisberg bike tour Siegfried's Mechanical Musical Museum OR Rudesheimer coffee
5	Ludwigshafen, Germany	"Romantic Heidelberg" excursion OR Schwetzingen Palace and Gardens OR Ladenburg bike tour OR Heidelberg Philosopher's Path hike
6	Strasbourg, France	"The Gem of the Alsace" tour OR Strasbourg bike tour
7	Breisach, Germany Basel, Switzerland	Riquewahr walking tour OR Freiburg excursion OR Breisach wine country bike tour OR Black Forest hike Overnight in Basel
8	Basel	DISEMBARKATION

For full details please visit www.amawaterways.eu

SAVE UP TO €1,200pp
BOOK BY 31 DECEMBER 2019^

DATES & FARES

EMBARKATION DATE	EMBARKATION CITY	SHIP NAME	7-NIGHT CRUISE (CAT. E)
Mar 26	Basel	AmaDante	€2,491
Apr 30	Luxembourg City	AmaDante	€2,991
Jul 23	Luxembourg City	AmaDante	€3,241
Sep 02	Luxembourg City	AmaSiena	€3,491
Sep 03	Luxembourg City	AmaDante	€3,491
Oct 15	Luxembourg City	AmaDante	€3,324
Nov 04	Luxembourg City	AmaSiena	€3,074

Wine Cruise

Cruise Fares: Fares are per person, based on double occupancy of a Cat. E deluxe outside stateroom with window.

To upgrade to a higher category, please add the following per person:

AMASIANA

CAT.	DECK	STATEROOM	SQ. M	ADD'L
D	Piano	Window	15	€249
CB	Violin	French Balcony	14	€583
CA	Violin & Cello	French Balcony	16	€833
BB	Cello	French/Outside Balcony	20	€1,249
BA	Violin	French/Outside Balcony	20	€1,416
AB	Cello	French/Outside Balcony	22	€1,583
AA	Violin	French/Outside Balcony	22	€1,749
Suite	Violin	French/Outside Balcony	33	€2,833

AMADANTE

CAT.	DECK	STATEROOM	SQ. M	ADD'L
D	Piano	Window	16	€249
C	Violin & Cello	French Balcony	16	€833
B	Violin & Cello	French Balcony	16	€999
A	Violin	French Balcony	16	€1,083
A+	Violin	French Balcony	21	€1,916
Suite	Violin	French Balcony	24	€2,083

Single Supplement Cruise: Category E and D 25% of per person twin fare; Category CB, CA/C, B, BB, BA, A, AB and AA 50% of per person twin fare; A+, AA+ and Suite 100% of per person twin fare. Single Supplements apply to all Land Programmes & Hotel Nights. Please call for details.

Deck Plans: See pages 170 - 177 of our 2020 Europe, Asia & Africa Brochure.

Airport Transfers: Luxembourg Airport to Ship (or reverse) - €38 per person. Ship to EuroAirport Basel Mulhouse Freiburg (or reverse) - €50 per person.

Land Programmes: Please call for details on pre- and post-cruise land programmes.

Extra hotel nights are available: Please call for prices & availability.

Note: Itinerary is subject to change. For the most up-to-date information, please refer to the itinerary schedule provided with your final documents.

^Book by 31st December 2019 and save up to €1,200 per person on selected sailings. Fares shown do not include savings. Visit www.amawaterways.eu or contact your Travel Agent for full details.



RHINE & MOSELLE DELIGHTS

10 NIGHTS | BASEL, SWITZERLAND TO AMSTERDAM, THE NETHERLANDS



DAILY PROGRAMME

DAY	DESTINATION	ACTIVITIES
1	Basel, Switzerland	★ EMBARKATION
2	Breisach, Germany	Riquewihr walking tour OR Freiburg excursion OR Breisach wine country bike tour OR Black Forest hike
3	Strasbourg, France	"The Gem of the Alsace" tour OR Strasbourg bike tour
4	Ludwigshafen, Germany	Heidelberg excursion OR Mannheim Baroque Palace OR Schwetzingen Gardens OR Heidelberg Philosopher's Path hike
	Rudesheim, Germany	Siegfried's Mechanical Musical Museum OR Rudesheimer coffee
5	Rudesheim	Gondola and wine tasting OR Schloss Johannisberg bike tour OR Vineyard hike
	Rhine Gorge	Castles along the Rhine scenic cruising
6	Moselle, Bernkastel, Germany	Scenic cruising Walking tour and wine tasting OR Moselle bike tour OR Landshut Castle hike
7	Trier, Germany	"Rome of the North" tour OR "Ancient Tales of the Porta Nigra" OR Trier bike tour OR Petrisberg hike
8	Moselle, Germany	Scenic cruising
	Cochem, Germany	Reichsburg Castle and walking tour OR Reichsburg Castle hike OR Cochem Mustard Mill OR Cochem bike tour
9	Cologne, Germany	"Holy City" walking tour and cathedral OR Kolsch beer tasting OR Bike tour
10	Amsterdam, The Netherlands	Canal cruise OR Jordaan tour*
11	Amsterdam	⚓ DISEMBARKATION

* Depending on docking location, Jordaan tour may not operate; therefore, an alternative tour will operate instead.

For full details please visit www.amawaterways.eu

SAVE UP TO €1,200pp
BOOK BY 31 DECEMBER 2019*

DATES & FARES

EMBARKATION DATE	EMBARKATION CITY	SHIP NAME	10-NIGHT CRUISE (CAT. E)
Aug 02	Amsterdam	AmaSiena	€4,391
Oct 04	Amsterdam	AmaSiena	€4,808

Cruise Fares: Fares are per person, based on double occupancy of a Cat. E deluxe outside stateroom with window.

To upgrade to a higher category, please add the following per person:

AMASIENA

CAT.	DECK	STATEROOM	SQ. M	ADD'L
D	Piano	Window	15	€358
CB	Violin	French Balcony	14	€833
CA	Violin & Cello	French Balcony	16	€1,166
BB	Cello	French/Outside Balcony	20	€1,749
BA	Violin	French/Outside Balcony	20	€1,999
AB	Cello	French/Outside Balcony	22	€2,249
AA	Violin	French/Outside Balcony	22	€2,499
Suite	Violin	French/Outside Balcony	33	€4,083

Single Supplement Cruise: Category E and D 25% of per person twin fare; Category CB, CA/C, BB, BA, AB and AA 50% of per person twin fare; Suite 100% of per person twin fare. Single Supplements apply to all Land Programmes & Hotel Nights. Please call for details

Deck Plans: See pages 170 - 177 of our 2020 Europe, Asia & Africa Brochure.

Airport Transfers: EuroAirport Basel Mulhouse Freiburg to Ship - €50 per person. Ship to Amsterdam Airport Schiphol - €25 per person.

Land Programmes: Please call for details on pre- and post-cruise land programmes.

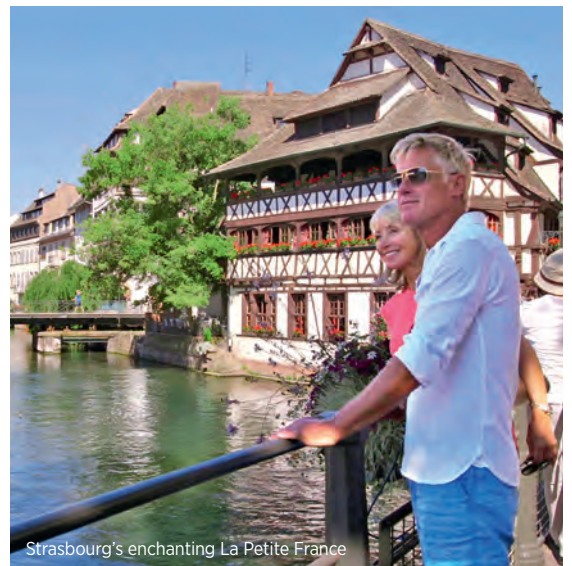
Extra hotel nights are available: Please call for prices & availability.

Note: Itinerary is subject to change. For the most up-to-date information, please refer to the itinerary schedule provided with your final documents.

* Book by 31st December 2019 and save up to €1,200 per person on selected sailings. Fares shown do not include savings. Visit www.amawaterways.eu or contact your Travel Agent for full details.



Cycle along the Moselle river, Germany



Strasbourg's enchanting La Petite France

RHINE & MOSELLE FAIRYTALES

11 NIGHTS | AMSTERDAM, THE NETHERLANDS TO BASEL, SWITZERLAND



DAILY PROGRAMME

DAY	DESTINATION	ACTIVITIES
1	Amsterdam, The Netherlands	EMBARKATION
2	Amsterdam	Canal cruise tour Scenic cruising out of Amsterdam
3	Cologne, Germany	"Holy City" walking tour and cathedral visit OR Cologne bike tour OR Kölsch beer tasting
4	Lahnstein, Germany	Unique Lahneck Castle visit OR Ehrenbreitstein Fortress and cable car ride to Koblenz OR "Two Rivers" bike tour OR Lahneck Castle hike
5	Moselle Cochem, Germany	Scenic cruising Reichsburg Castle and walking tour OR Bundesbank Bunker vault tour OR Cochem hike OR Cochem bike tour
6	Moselle Trier, Germany	Scenic cruising "Rome of the North" tour OR "Ancient tales of the Porta Nigra" tour OR Trier bike tour OR Petrisberg hike OR Rudesheimer coffee
7	Bernkastel, Germany	Walking tour and wine tasting OR Moselle bike tour OR Landshut Castle hike
8	Rhine Gorge Rüdesheim, Germany	Castles along the Rhine scenic cruising Gondola ride and wine tasting OR Schloss Johannisberg bike tour OR Vineyard hike Siegfried's Mechanical Musical Museum OR Rudesheimer coffee
9	Ludwigshafen, Germany	"Romantic Heidelberg" excursion OR Mannheim Baroque Palace OR Schwetzingen Gardens OR Heidelberg Philosopher's Path hike OR Ladenburg bike tour
10	Strasbourg, France	"The Gem of the Alsace" tour OR Strasbourg bike tour
11	Breisach, Germany	Riquewihr walking tour OR Freiburg excursion OR Black Forest hike OR Breisach wine country bike tour
12	Basel, Switzerland	DISEMBARKATION

For full details please visit www.amawaterways.eu

SAVE UP TO €1,200pp
BOOK BY 31 DECEMBER 2019^

DATES & FARES

EMBARKATION DATE	EMBARKATION CITY	SHIP NAME	11-NIGHT CRUISE (CAT. E)
Jul 22	Amsterdam	AmaSiena	€4,831
Sep 23	Amsterdam	AmaSiena	€5,247

Cruise Fares: Fares are per person, based on double occupancy of a Cat. E deluxe outside stateroom with window.

To upgrade to a higher category, please add the following per person:

AMASIENA

CAT.	DECK	STATEROOM	SQ. M	ADD'L
D	Piano	Window	15	€391
CB	Violin	French Balcony	14	€916
CA	Violin & Cello	French Balcony	16	€1,333
BB	Cello	French/Outside Balcony	20	€1,999
BA	Violin	French/Outside Balcony	20	€2,249
AB	Cello	French/Outside Balcony	22	€2,499
AA	Violin	French/Outside Balcony	22	€2,749
Suite	Violin	French/Outside Balcony	33	€4,416

Single Supplement Cruise: Category E and D 25% of per person twin fare; Category CB, CA/C, BB, BA, AB and AA 50% of per person twin fare; Suite 100% of per person twin fare. Single Supplements apply to all Land Programmes & Hotel Nights. Please call for details.

Deck Plans: See pages 170 - 177 of our 2020 Europe, Asia & Africa Brochure.

Airport Transfers: Amsterdam Airport Schiphol to Ship - €50 per person. Ship to EuroAirport Basel Mulhouse Freiburg - €25 per person.

Land Programmes: Please call for details on pre- and post-cruise land programmes.

Extra hotel nights are available: Please call for prices & availability.

Note: Itinerary is subject to change. For the most up-to-date information, please refer to the itinerary schedule provided with your final documents.

^ Book by 31st December 2019 and save up to €1,200 per person on selected sailings. Fares shown do not include savings. Visit www.amawaterways.eu or contact your Travel Agent for full details.



Shopping in Bernkastel, Germany



Traben-Trarbach, Germany

MAGNA ON THE DANUBE

7 NIGHTS | BUDAPEST, HUNGARY TO VILSHOFEN, GERMANY (OR REVERSE)



DAILY PROGRAMME

DAY	DESTINATION	ACTIVITIES
1	Budapest, Hungary	☀ EMBARKATION Illuminations cruise
2	Budapest	"Queen of the Danube" tour OR Castle Hill hike Scenic cruising Danube Bend
3	Bratislava, Slovakia	"Coronation City of Kings" walking tour OR Tastes of Slovakia OR Bike tour
4	Vienna, Austria	"Imperial Vienna" tour OR Vienna bike tour Schönbrunn Palace OR Free time
5	Krems, Austria	Dürnstein walking tour OR Dürnstein wine and apricot tastings OR Krems to Spitz bike tour Scenic cruising UNESCO Wachau Valley Spitz, Austria Melk Abbey OR Spitz to Melk bike tour OR Spitz hike Exclusive Wine Festival
6	Linz, Austria	"UNESCO City of Media Arts" walking tour OR "Cultural Mile" bike tour OR Full-day Salzburg excursion Half-day Český Krumlov excursion
7	Passau, Germany Vilshofen, Germany	"City of Three Rivers" walking tour OR Passau Castle hike Exclusive Oktoberfest Celebration
8	Vilshofen	⚓ DISEMBARKATION

For full details please visit www.amawaterways.eu

AmaMagna sailing the Danube

SAVE UP TO €1,200pp
BOOK BY 31 DECEMBER 2019*

DATES & FARES

EMBARKATION DATE	EMBARKATION CITY	SHIP NAME	7-NIGHT CRUISE (CAT. E)
Mar 15	Budapest	AmaMagna	€2,574
Mar 22	Vilshofen	AmaMagna	€2,657
Mar 29	Budapest	AmaMagna	€2,741
Apr 05	Vilshofen	AmaMagna	€2,824
Apr 12	Budapest	AmaMagna	€2,907
Apr 19	Vilshofen	AmaMagna	€2,991
Apr 26	Budapest	AmaMagna	€3,157
May 03	Vilshofen	AmaMagna	€3,241
May 24	Budapest	AmaMagna	€3,407
May 31	Vilshofen	AmaMagna	€3,407
Jun 28	Vilshofen	AmaMagna	€3,407
Jul 05	Budapest	AmaMagna	€3,407
Jul 12	Vilshofen	AmaMagna	€3,407
Jul 19	Budapest	AmaMagna	€3,407
Jul 26	Vilshofen	AmaMagna	€3,407
Aug 02	Budapest	AmaMagna	€3,407
Aug 09	Vilshofen	AmaMagna	€3,407
Aug 16	Budapest	AmaMagna	€3,407
Aug 23	Vilshofen	AmaMagna	€3,491
Aug 30	Budapest	AmaMagna	€3,574
Sep 06	Vilshofen	AmaMagna	€3,657
Sep 13	Budapest	AmaMagna	€3,657
Sep 20	Vilshofen	AmaMagna	€3,657
Sep 27	Budapest	AmaMagna	€3,657
Oct 04	Vilshofen	AmaMagna	€3,657
Oct 11	Budapest	AmaMagna	€3,491
Oct 18	Vilshofen	AmaMagna	€3,407
Oct 25	Budapest	AmaMagna	€3,324
Nov 01	Vilshofen	AmaMagna	€3,241
Nov 08	Budapest	AmaMagna	€3,074
Nov 15	Vilshofen	AmaMagna	€2,991
Dec 27	Vilshofen	AmaMagna	€3,074

🍷 Wine Cruise 🍷 New Year's Cruise

Cruise Fares: Fares are per person, based on double occupancy of a Cat. E deluxe outside stateroom with window.

To upgrade to a higher category, please add the following per person:

AMAMAGNA

CAT.	DECK	STATEROOM	SQ. M	ADD'L
D	Piano	Window	19	€416
AB	Cello	Outside Balcony	23	€1,583
AA	Violin	Outside Balcony	23	€1,749
SB	Cello	Outside Balcony	33	€2,499
SA	Violin	Outside Balcony	33	€2,833
Grand Suite	Violin	Outside Balcony	44	€5,833
Owner's Suite	Violin	Outside Balcony	66	€8,333

Single Supplement Cruise: Category E and D 25% of per person twin fare; Category AB, AA, SB and SA 50% of per person twin fare; Category Grand Suite and Owner's Suite 100% of per person twin fare. Single Supplements apply to all Land Programmes & Hotel Nights. Please call for details.

Deck Plans: See pages 170 - 171 of our 2020 Europe, Asia & Africa Brochure.

Airport Transfers: Budapest Ferenc Liszt International Airport to Ship (or reverse) - €25 per person. Ship to Munich Airport (or reverse) - €25 per person

Land Programmes: Please call for details on pre- and post-cruise land programmes.

Extra hotel nights are available: Please call for prices & availability.

Note: Itinerary is subject to change. For the most up-to-date information, please refer to the itinerary schedule provided with your final documents.

*Book by 31st December 2019 and save up to €1,200 per person on selected sailings. Fares shown do not include savings. Visit www.amawaterways.eu or contact your Travel Agent for full details.



Fresh herbs from the garden on the AmaMagna

ROMANTIC DANUBE

7 NIGHTS | VILSHOFEN, GERMANY TO BUDAPEST, HUNGARY



DAILY PROGRAMME

DAY	DESTINATION	ACTIVITIES
1	Vilshofen, Germany	☀ EMBARKATION Exclusive Oktoberfest
2	Vilshofen, Germany	Free time "City of Three Rivers" walking tour OR Passau Castle hike OR Danube bike tour
3	Linz, Austria	Full-day Salzburg excursion OR "UNESCO City of Media Arts" walking tour OR "Cultural Mile" bike tour Half-day afternoon Český Krumlov excursion
4	Scenic cruising, Weissenkirchen, Austria	Strudengau and UNESCO Wachau valleys Dürnstein walking tour and Melk Benedictine Abbey OR Dürnstein Fortress hike OR Apricots and sweets tasting OR Wachau Valley bike tour Evening wine tasting at local winery
5	Vienna, Austria	"Imperial Vienna" tour OR Vienna bike tour Free time
6	Bratislava, Slovakia	"Coronation City" walking tour OR Tastes of Slovakia OR Bratislava Castle hike
7	Budapest, Hungary	"Queen of the Danube" tour OR Castle Hill hike Illuminations cruise
8	Budapest	⚓ DISEMBARKATION

For full details please visit www.amawaterways.eu



Dürnstein, Austria



Wine tasting at a local vineyard



Illuminations cruise, Budapest, Hungary





DATES & FARES

EMBARKATION DATE	EMBARKATION CITY	SHIP NAME	7-NIGHT CRUISE (CAT. E)
Mar 27	Vilshofen	AmaSonata	€2,574
Mar 28	Vilshofen	AmaLea	€2,574
Mar 30	Vilshofen	AmaViola	€2,574
Apr 11	Vilshofen	AmaLea	€2,741
Apr 12	Vilshofen	AmaCerto	€2,741
Apr 13	Vilshofen	AmaViola	€2,741
Apr 25	Vilshofen	AmaLea	€2,907
Apr 27	Vilshofen	AmaViola	€2,991
May 08	Vilshofen	AmaSonata	€3,157
May 09	Vilshofen	AmaLea	€3,157
May 10	Vilshofen	AmaCerto	€3,157
May 11	Vilshofen	AmaViola	€3,157
May 22	Vilshofen	AmaSonata	€3,241
May 23	Vilshofen	AmaLea	€3,241
May 25	Vilshofen	AmaViola	€3,241
May 29	Vilshofen	AmaSerena	€3,241
Jun 05	Vilshofen	AmaSonata	€3,241
Jun 06	Vilshofen	AmaLea	€3,241
Jun 07	Vilshofen	AmaCerto	€3,241
Jun 08	Vilshofen	AmaViola	€3,241
Jun 12	Vilshofen	AmaSerena	€3,241
Jun 19	Vilshofen	AmaSonata	€3,241
Jun 21	Vilshofen	AmaPrima	€3,241
Jun 22	Vilshofen	AmaViola	€3,241
Jun 26	Vilshofen	AmaSerena	€3,241
Jul 03	Vilshofen	AmaSonata	€3,241
Jul 05	Vilshofen	AmaPrima	€3,241
Jul 06	Vilshofen	AmaViola	€3,241
Jul 10	Vilshofen	AmaSerena	€3,241
Jul 17	Vilshofen	AmaSonata	€3,241
Jul 18	Vilshofen	AmaLea	€3,241
Jul 19	Vilshofen	AmaPrima	€3,241
Jul 20	Vilshofen	AmaViola	€3,241
Jul 24	Vilshofen	AmaSerena	€3,241
Jul 31	Vilshofen	AmaSonata	€3,241
Aug 01	Vilshofen	AmaLea	€3,241
Aug 03	Vilshofen	AmaViola	€3,241
Aug 07	Vilshofen	AmaSerena	€3,241
Aug 14	Vilshofen	AmaSonata	€3,241
Aug 15	Vilshofen	AmaLea	€3,241
Aug 16	Vilshofen	AmaPrima	€3,241
Aug 17	Vilshofen	AmaViola	€3,241
Aug 21	Vilshofen	AmaSerena	€3,324
Aug 28	Vilshofen	AmaSonata	€3,407
Aug 29	Vilshofen	AmaLea	€3,407
Aug 30	Vilshofen	AmaCerto	€3,407
Aug 31	Vilshofen	AmaViola	€3,407
Sep 04	Vilshofen	AmaSerena	€3,491
Sep 11	Vilshofen	AmaSonata	€3,491
Sep 12	Vilshofen	AmaLea	€3,491
Sep 13	Vilshofen	AmaPrima	€3,491
Sep 14	Vilshofen	AmaViola	€3,491
Sep 18	Vilshofen	AmaSerena	€3,491

SAVE UP TO €1,200pp
BOOK BY 31 DECEMBER 2019*

EMBARKATION DATE	EMBARKATION CITY	SHIP NAME	7-NIGHT CRUISE (CAT. E)
Sep 25	Vilshofen	AmaSonata	€3,491
Sep 27	Vilshofen	AmaCerto	€3,491
Sep 28	Vilshofen	AmaViola	€3,491
Oct 02	Vilshofen	AmaSerena	€3,491
Oct 09	Vilshofen	AmaSonata	€3,407
Oct 10	Vilshofen	AmaLea	€3,407
Oct 11	Vilshofen	AmaPrima	€3,324
Oct 12	Vilshofen	AmaViola	€3,324
Oct 16	Vilshofen	AmaSerena	€3,324
Oct 23	Vilshofen	AmaSonata	€3,157
Oct 24	Vilshofen	AmaLea	€3,157
Oct 25	Vilshofen	AmaCerto	€3,157
Oct 30	Vilshofen	AmaSerena	€3,074
Nov 06	Vilshofen	AmaSonata	€2,907
Nov 07	Vilshofen	AmaLea	€2,907
Nov 08	Vilshofen	AmaPrima	€2,907
Nov 13	Vilshofen	AmaSerena	€2,824
Nov 20	Vilshofen	AmaSonata	€2,741
Nov 21	Vilshofen	AmaLea	€2,741
Dec 25	Vilshofen	AmaSerena	€2,907

Wine Cruise New Year's Cruise

Cruise Fares: Fares are per person, based on double occupancy of a Cat. E deluxe outside stateroom with window.

To upgrade to a higher category, please add the following per person:
AMACERTO, AMALEA, AMAPRIMA, AMASERENA, AMASONATA & AMAVIOLA

CAT.	DECK	STATEROOM	SQ. M	ADD'L
D	Piano	Window	15	€249
CB	Violin	French Balcony	14	€583
CA/C	Violin & Cello	French Balcony	16	€833
BB	Cello	French/Outside Balcony	20	€1,249
BA	Violin	French/Outside Balcony	20	€1,416
AB	Cello	French/Outside Balcony	22	€1,583
AA	Violin	French/Outside Balcony	22	€1,749
AA+	Violin	French/Outside Balcony	27	€2,249
Suite	Violin	French/Outside Balcony	33	€2,833

Single Supplement Cruise: Category E and D 25% of per person twin fare; Category CB, CA/C, BB, BA, AB and AA 50% of per person twin fare; AA+ and Suite 100% of per person twin fare. Single Supplements apply to all Land Programmes & Hotel Nights. Please call for details.

Deck Plans: See pages 170 - 177 of our 2020 Europe, Asia & Africa Brochure.
Airport Transfers: Munich Airport to Ship - €25 per person.
Ship to Budapest Ferenc Liszt International Airport - €25 per person.

Land Programmes: Please call for details on pre- and post-cruise land programmes.
Extra hotel nights are available: Please call for prices & availability.

Note: Itinerary is subject to change. For the most up-to-date information, please refer to the itinerary schedule provided with your final documents.

*Book by 31st December 2019 and save up to €1,200 per person on selected sailings. Fares shown do not include savings. Visit www.amawaterways.eu or contact your Travel Agent for full details.



Salzburg, Austria

MELODIES OF THE DANUBE

7 NIGHTS | BUDAPEST, HUNGARY TO VILSHOFEN, GERMANY



DAILY PROGRAMME

DAY	DESTINATION	ACTIVITIES
1	Budapest, Hungary	☀ EMBARKATION Illuminations cruise
2	Budapest	"Queen of the Danube" tour OR Castle Hill hike
3	Bratislava, Slovakia	"Coronation City" walking tour OR Tastes of Slovakia OR Bratislava Castle hike
4	Vienna, Austria	City tour OR Vienna bike tour Free time
5	Weissenkirchen, Austria	Highlights of Dürnstein and Melk Abbey OR Weissenkirchen to Melk bike tour OR Weissenkirchen walking tour and Melk Abbey OR Dürnstein excursion with wine and apricot tastings OR Dürnstein fortress hike
	Scenic cruising Grein, Austria	Strudengau Valley Exclusive castle visit with private reception
6	Linz, Austria	Full-day Salzburg excursion OR "UNESCO City of Media Arts" walking tour OR "Cultural Mile" bike tour Half-day afternoon Český Krumlov excursion
7	Passau, Germany	"City of Three Rivers" walking tour OR Passau bike tour OR Passau Castle hike
	Vilshofen, Germany	Exclusive Oktoberfest celebration
8	Vilshofen	⚓ DISEMBARKATION

For full details please visit www.amawaterways.eu



Budapest, Hungary



Enjoy breathtaking views from your stateroom balcony



Exclusive Oktoberfest, Vilshofen, Germany





SAVE UP TO €1,200pp
BOOK BY 31 DECEMBER 2019*

DATES & FARES

EMBARKATION DATE	EMBARKATION CITY	SHIP NAME	7-NIGHT CRUISE (CAT. E)
Mar 20	Budapest	AmaSonata	€2,407
Mar 21	Budapest	AmaLea	€2,491
Mar 23	Budapest	AmaViola	€2,491
Apr 04	Budapest	AmaLea	€2,657
Apr 05	Budapest	AmaCerto	€2,657
Apr 06	Budapest	AmaViola	€2,657
Apr 18	Budapest	AmaLea	€2,824
Apr 20	Budapest	AmaViola	€2,907
May 01	Budapest	AmaSonata	€2,991
May 02	Budapest	AmaLea	€3,074
May 03	Budapest	AmaCerto	€3,074
May 04	Budapest	AmaViola	€3,074
May 15	Budapest	AmaSonata	€3,241
May 16	Budapest	AmaLea	€3,241
May 18	Budapest	AmaViola	€3,241
May 22	Budapest	AmaSerena	€3,241
May 29	Budapest	AmaSonata	€3,241
May 30	Budapest	AmaLea	€3,241
May 31	Budapest	AmaCerto	€3,241
Jun 01	Budapest	AmaViola	€3,241
Jun 05	Budapest	AmaSerena	€3,241
Jun 12	Budapest	AmaSonata	€3,241
Jun 13	Budapest	AmaLea	€3,241
Jun 14	Budapest	AmaPrima	€3,241
Jun 15	Budapest	AmaViola	€3,241
Jun 19	Budapest	AmaSerena	€3,241
Jun 26	Budapest	AmaSonata	€3,241
Jun 28	Budapest	AmaPrima	€3,241
Jun 29	Budapest	AmaViola	€3,241
Jul 03	Budapest	AmaSerena	€3,241
Jul 10	Budapest	AmaSonata	€3,241
Jul 12	Budapest	AmaPrima	€3,241
Jul 13	Budapest	AmaViola	€3,241
Jul 17	Budapest	AmaSerena	€3,241
Jul 24	Budapest	AmaSonata	€3,241
Jul 25	Budapest	AmaLea	€3,241
Jul 27	Budapest	AmaViola	€3,241
Jul 31	Budapest	AmaSerena	€3,241
Aug 07	Budapest	AmaSonata	€3,241
Aug 08	Budapest	AmaLea	€3,241
Aug 09	Budapest	AmaPrima	€3,241
Aug 10	Budapest	AmaViola	€3,241
Aug 14	Budapest	AmaSerena	€3,241
Aug 21	Budapest	AmaSonata	€3,324
Aug 22	Budapest	AmaLea	€3,324
Aug 23	Budapest	AmaCerto	€3,324
Aug 24	Budapest	AmaViola	€3,324
Aug 28	Budapest	AmaSerena	€3,407
Sep 04	Budapest	AmaSonata	€3,491
Sep 05	Budapest	AmaLea	€3,491
Sep 06	Budapest	AmaPrima	€3,491
Sep 07	Budapest	AmaViola	€3,491
Sep 11	Budapest	AmaSerena	€3,491
Sep 18	Budapest	AmaSonata	€3,491
Sep 19	Budapest	AmaLea	€3,491
Sep 20	Budapest	AmaCerto	€3,491
Sep 21	Budapest	AmaViola	€3,491

EMBARKATION DATE	EMBARKATION CITY	SHIP NAME	7-NIGHT CRUISE (CAT. E)
Sep 25	Budapest	AmaSerena	€3,491
Oct 02	Budapest	AmaSonata	€3,491
Oct 03	Budapest	AmaLea	€3,491
Oct 04	Budapest	AmaPrima	€3,491
Oct 05	Budapest	AmaViola	€3,407
Oct 09	Budapest	AmaSerena	€3,407
Oct 16	Budapest	AmaSonata	€3,324
Oct 17	Budapest	AmaLea	€3,241
Oct 18	Budapest	AmaCerto	€3,241
Oct 23	Budapest	AmaSerena	€3,157
Oct 30	Budapest	AmaSonata	€3,074
Oct 31	Budapest	AmaLea	€3,074
Nov 01	Budapest	AmaPrima	€3,074
Nov 06	Budapest	AmaSerena	€2,907
Nov 13	Budapest	AmaSonata	€2,824
Nov 14	Budapest	AmaLea	€2,824
Nov 15	Budapest	AmaCerto	€2,824
Nov 20	Budapest	AmaSerena	€2,741
Dec 25	Budapest	AmaSonata	€2,907
Dec 26	Budapest	AmaLea	€2,907
Dec 27	Budapest	AmaCerto	€2,907
Dec 27	Budapest	AmaPrima	€2,907
Dec 28	Budapest	AmaViola	€2,907

Wine Cruise New Year's Cruise

Cruise Fares: Fares are per person, based on double occupancy of a Cat. E deluxe outside stateroom with window.

To upgrade to a higher category, please add the following per person:

AMACERTO, AMALEA, AMAPRIMA, AMASERENA, AMASONATA & AMAVIOLA

CAT.	DECK	STATEROOM	SQ. M	ADD'L
D	Piano	Window	15	€249
CB	Violin	French Balcony	14	€583
CA/C	Violin & Cello	French Balcony	16	€833
BB	Cello	French/Outside Balcony	20	€1,249
BA	Violin	French/Outside Balcony	20	€1,416
AB	Cello	French/Outside Balcony	22	€1,583
AA	Violin	French/Outside Balcony	22	€1,749
AA+	Violin	French/Outside Balcony	27	€2,249
Suite	Violin	French/Outside Balcony	33	€2,833

Single Supplement Cruise: Category E and D 25% of per person twin fare; Category CB, CA/C, BB, BA, AB and AA 50% of per person twin fare; AA+ and Suite 100% of per person twin fare. Single Supplements apply to all Land Programmes & Hotel Nights. Please call for details.

Deck Plans: See pages 170 - 177 of our 2020 Europe, Asia & Africa Brochure.

Airport Transfers: Budapest Ferenc Liszt International Airport to Ship - €25 per person. Ship to Munich Airport - €25 per person.

Land Programmes: Please call for details on pre- and post-cruise land programmes.

Extra hotel nights are available: Please call for prices & availability.

Note: Itinerary is subject to change. For the most up-to-date information, please refer to the itinerary schedule provided with your final documents.

*Book by 31st December 2019 and save up to €1,200 per person on selected sailings. Fares shown do not include savings. Visit www.amawaterways.eu or contact your Travel Agent for full details.

Exclusive Visit to Greinburg Castle, Grein, Austria

LEGENDARY DANUBE

7 NIGHTS | NUREMBERG, GERMANY TO BUDAPEST, HUNGARY



DAILY PROGRAMME

DAY	DESTINATION	ACTIVITIES
1	Nuremberg, Germany	☀ EMBARKATION
2	Nuremberg	Medieval city tour OR WWII city tour OR Tastes of Franconia Cruise Main-Danube Canal
3	Regensburg, Germany	UNESCO city walking tour OR Walhalla bike tour OR Tastes of Bavaria
4	Passau, Germany	"City of Three Rivers" walking tour OR Passau bike tour OR Passau Castle hike
	Linz, Austria	Free time
5	Melk, Austria	Benedictine Abbey tour OR Danube bike tour OR Dürnstein walking tour
	Scenic cruising Vienna, Austria	UNESCO Wachau Valley Free time
6	Vienna	"Imperial Vienna" tour OR Vienna bike tour Free time
7	Budapest, Hungary	"Queen of the Danube" tour OR Castle Hill hike Free time Illuminations cruise
8	Budapest	⚓ DISEMBARKATION

For full details please visit www.amawaterways.eu



Passau, Germany

SAVE UP TO €1,200pp
BOOK BY 31 DECEMBER 2019*

DATES & FARES

EMBARKATION DATE	EMBARKATION CITY	SHIP NAME	7-NIGHT CRUISE (CAT. E)
Apr 10	Nuremberg	AmaSonata	€2,741
Apr 24	Nuremberg	AmaSonata	€2,907
Jul 05	Nuremberg	AmaCerto	€3,241
Aug 02	Nuremberg	AmaCerto	€3,241
Oct 26	Nuremberg	AmaViola	€3,157
Nov 09	Nuremberg	AmaViola	€2,907

Cruise Fares: Fares are per person, based on double occupancy of a Cat. E deluxe outside stateroom with window.

To upgrade to a higher category, please add the following per person:

AMACERTO, AMASONATA & AMAVIOLA

CAT.	DECK	STATEROOM	SQ. M	ADD'L
D	Piano	Window	15	€249
CB	Violin	French Balcony	14	€583
CA/C	Violin & Cello	French Balcony	16	€833
BB	Cello	French/Outside Balcony	20	€1,249
BA	Violin	French/Outside Balcony	20	€1,416
AB	Cello	French/Outside Balcony	22	€1,583
AA	Violin	French/Outside Balcony	22	€1,749
AA+	Violin	French/Outside Balcony	27	€2,249
Suite	Violin	French/Outside Balcony	33	€2,833

Single Supplement Cruise: Category E and D 25% of per person twin fare; Category CB, CA/C, BB, BA, AB and AA 50% of per person twin fare; AA+ and Suite 100% of per person twin fare. Single Supplements apply to all Land Programmes & Hotel Nights. Please call for details.

Deck Plans: See pages 170 - 177 of our 2020 Europe, Asia & Africa Brochure.

Airport Transfers: Albrecht Dürer Airport Nuremberg to Ship - €29 per person or Munich Airport to Ship - €111 per person.

Land Programmes: Please call for details on pre- and post-cruise land programmes.

Extra hotel nights are available: Please call for prices & availability.

Note: Itinerary is subject to change and can be booked as cruise only. For the most up-to-date information, please refer to the itinerary schedule provided with your final documents.

*Book by 31st December 2019 and save up to €1,200 per person on selected sailings. Fares shown do not include savings. Visit www.amawaterways.eu or contact your Travel Agent for full details.



Melk Abbey Library, Austria



Tastes of Bavaria, Regensburg, Germany

BLUE DANUBE DISCOVERY

7 NIGHTS | BUDAPEST, HUNGARY TO NUREMBERG, GERMANY



DAILY PROGRAMME

DAY	DESTINATION	ACTIVITIES
1	Budapest, Hungary	EMBARKATION Illuminations cruise
2	Bratislava, Slovakia	Walking tour OR Tastes of Slovakia OR Bratislava Castle hike
3	Vienna, Austria	"Imperial Vienna" tour OR Vienna bike tour Free time
4	Dürnstein, Austria	Walking tour and wine tasting OR Dürnstein Fortress hike OR Apricots and sweets tasting
	Scenic cruising	UNESCO Wachau Valley OR Danube bike tour
	Melk, Austria	Benedictine Abbey tour
5	Passau, Germany	"City of Three Rivers" walking tour OR Passau bike tour OR Passau Castle hike
6	Regensburg, Germany	UNESCO city walking tour OR Walhalla bike tour OR Tastes of Bavaria
7	Nuremberg, Germany	Medieval city tour OR WWII city tour OR Tastes of Franconia
8	Nuremberg	DISEMBARKATION

For full details please visit www.amawaterways.eu



Cycle along the Danube River

SAVE UP TO €1,200pp
BOOK BY 31 DECEMBER 2019*

DATES & FARES

EMBARKATION DATE	EMBARKATION CITY	SHIP NAME	7-NIGHT CRUISE (CAT. E)
Apr 03	Budapest	AmaSonata	€2,657
Apr 17	Budapest	AmaSonata	€2,824
Jun 28	Budapest	AmaCerto	€3,241
Jul 26	Budapest	AmaCerto	€3,241
Oct 19	Budapest	AmaViola	€3,241
Nov 02	Budapest	AmaViola	€3,074
Nov 15	Budapest	AmaPrima	€2,824
Nov 16	Budapest	AmaViola	€2,824

Cruise Fares: Fares are per person, based on double occupancy of a Cat. E deluxe outside stateroom with window.

To upgrade to a higher category, please add the following per person:

AMACERTO, AMAPRIMA, AMASONATA & AMAVIOLA

CAT.	DECK	STATEROOM	SQ. M	ADD'L
D	Piano	Window	15	€249
CB	Violin	French Balcony	14	€583
CA/C	Violin & Cello	French Balcony	16	€833
BB	Cello	French/Outside Balcony	20	€1,249
BA	Violin	French/Outside Balcony	20	€1,416
AB	Cello	French/Outside Balcony	22	€1,583
AA	Violin	French/Outside Balcony	22	€1,749
AA+	Violin	French/Outside Balcony	27	€2,249
Suite	Violin	French/Outside Balcony	33	€2,833

Single Supplement Cruise: Category E and D 25% of per person twin fare; Category CB, CA/C, BB, BA, AB and AA 50% of per person twin fare; AA+ and Suite 100% of per person twin fare. Single Supplements apply to all Land Programmes & Hotel Nights. Please call for details.

Deck Plans: See pages 170 - 177 of our 2020 Europe, Asia & Africa Brochure.

Airport Transfers: Budapest Ferenc Liszt International Airport to Ship - €50 per person. Ship to Albrecht Dürer Airport Nuremberg - €29 per person or Ship to Munich Airport - €111 per person.

Land Programmes: Please call for details on pre- and post-cruise land programmes.

Extra hotel nights are available: Please call for prices & availability.

Note: Itinerary is subject to change and can be booked as cruise only. For the most up-to-date information, please refer to the itinerary schedule provided with your final documents.

*Book by 31st December 2019 and save up to €1,200 per person on selected sailings. Fares shown do not include savings. Visit www.amawaterways.eu or contact your Travel Agent for full details.



Passau, Germany



Nuremberg, Germany

GEMS OF SOUTHEAST EUROPE

7 NIGHTS | BUDAPEST, HUNGARY TO GIURGIU, ROMANIA (OR REVERSE)

SAVE UP TO €1,200pp
BOOK BY 31 DECEMBER 2019*

DAILY PROGRAMME

DAY	DESTINATION	ACTIVITIES
1	Budapest, Hungary	★ EMBARKATION Illuminations cruise
2	Budapest, Hungary	Scenic cruising Mohács, Pécs excursion OR Szekszárd wine tasting OR Mohács bike tour
3	Vukovar, Croatia Ilok, Croatia Novi Sad, Serbia	City tour and Eltz Palace OR Croatian wine tasting "The Athens of Serbia" walking tour OR Novi Sad bike tour OR Fruska Gora National Park hike Evening Petrovaradin Fortress visit
4	Belgrade, Serbia	"The City by Two Rivers" tour Royal Palace and Tito's Memorial tour OR Quburich Brandy tasting OR Belgrade bike tour OR Belgrade Fortress hike
5	Iron Gates	Full-day scenic cruising
6	Vidin, Bulgaria	Baba Vida Fortress and Belogradchik with choice to hike OR Banitsa pastry and yoghurt tasting OR Vidin bike tour
7	Rousse, Bulgaria	Veliko Tarnovo excursion OR Rousse walking tour and Rock-Hewn Churches Bucharest excursion
8	Giurgiu, Romania	⚓ DISEMBARKATION

For full details please visit www.amawaterways.eu

DATES & FARES

EMBARKATION DATE	EMBARKATION CITY	SHIP NAME	7-NIGHT CRUISE (CAT. E)
Mar 22	Budapest	AmaCerto	€2,491
Mar 29	Giurgiu	AmaCerto	€2,574
Apr 19	Budapest	AmaCerto	€2,824
Apr 26	Giurgiu	AmaCerto	€2,991
May 10	Budapest	AmaMagna	€3,324
May 17	Budapest	AmaCerto	€3,241
May 17	Giurgiu	AmaMagna	€3,407
May 24	Giurgiu	AmaCerto	€3,241
Jun 07	Budapest	AmaMagna	€3,407
Jun 14	Budapest	AmaCerto	€3,241
Jun 21	Giurgiu	AmaCerto	€3,241
Jul 12	Budapest	AmaCerto	€3,241
Jul 19	Giurgiu	AmaCerto	€3,241
Jul 26	Budapest	AmaPrima	€3,241
Aug 02	Giurgiu	AmaPrima	€3,241
Aug 09	Budapest	AmaCerto	€3,241
Aug 16	Giurgiu	AmaCerto	€3,241
Aug 23	Budapest	AmaPrima	€3,324
Aug 30	Giurgiu	AmaPrima	€3,407
Sep 06	Budapest	AmaCerto	€3,491
Sep 13	Giurgiu	AmaCerto	€3,491
Sep 20	Budapest	AmaPrima	€3,491
Sep 27	Giurgiu	AmaPrima	€3,491
Oct 04	Budapest	AmaCerto	€3,491
Oct 11	Giurgiu	AmaCerto	€3,324
Oct 18	Budapest	AmaPrima	€3,241
Oct 25	Giurgiu	AmaPrima	€3,157
Nov 01	Budapest	AmaCerto	€3,074
Nov 08	Giurgiu	AmaCerto	€2,907

Wine Cruise

Cruise Fares: Fares are per person, based on double occupancy of a Cat. E deluxe outside stateroom with window.**To upgrade to a higher category, please add the following per person:**

AMACERTO & AMAPRIMA

CAT.	DECK	STATEROOM	SQ. M	ADD'L
D	Piano	Window	15	€249
C	Violin & Cello	French Balcony	16	€833
BB	Cello	French/Outside Balcony	20	€1,249
BA	Violin	French/Outside Balcony	20	€1,416
AB	Cello	French/Outside Balcony	22	€1,583
AA	Violin	French/Outside Balcony	22	€1,749
AA+	Violin	French/Outside Balcony	27	€2,249
Suite	Violin	French/Outside Balcony	33	€2,833

AMAMAGNA

CAT.	DECK	STATEROOM	SQ. M	ADD'L
D	Piano	Window	19	€416
AB	Cello	Outside Balcony	23	€1,583
AA	Violin	Outside Balcony	23	€1,749
SB	Cello	Outside Balcony	33	€2,499
SA	Violin	Outside Balcony	33	€2,833
Grand Suite	Violin	Outside Balcony	44	€5,833
Owner's Suite	Violin	Outside Balcony	66	€8,333

Single Supplement Cruise: Category E and D 25% of per person twin fare; Category CB, CA/C, BB, BA, AB and AA 50% of per person twin fare; AA+ and Suite 100% of per person twin fare. AmaMagna Category SB and SA 50% of per person twin fare; Category Grand Suite and Owners Suite 100% of per person twin fare. Single Supplements apply to all Land Programmes & Hotel Nights. Please call for details.**Deck Plans:** See pages 170 - 177 of our 2020 Europe, Asia & Africa Brochure.**Airport Transfers:** Budapest Ferenc Liszt International Airport to Ship (or reverse) - €25 per person. Ship to Bucharest Henri Coandă International Airport - €83 per person.**Land Programmes:** Please call for details on pre- and post-cruise land programmes.**Extra hotel nights are available:** Please call for prices & availability.**Note:** Itinerary is subject to change. For the most up-to-date information, please refer to the itinerary schedule provided with your final documents.*Book by 31st December 2019 and save up to €1,200 per person on selected sailings. Fares shown do not include savings. Visit www.amawaterways.eu or contact your Travel Agent for full details.

Scenic views of Budapest Parliament



Veliko Tarnovo medieval fortress

MAGNIFICENT EUROPE

14 NIGHTS | AMSTERDAM, THE NETHERLANDS TO BUDAPEST, HUNGARY
(OR REVERSE)



DAILY PROGRAMME

DAY	DESTINATION	ACTIVITIES
1	Amsterdam, The Netherlands	EMBARKATION
2	Amsterdam	Canal cruise tour
3	Cologne, Germany	"Holy City" walking tour and cathedral visit OR Kölsch beer tasting OR Cologne bike tour
4	Rhine Gorge, Rüdesheim, Germany	Castles along the Rhine scenic cruising Siegfried's Mechanical Musical Museum OR Gondola ride OR Rüdesheimer coffee
5	Miltenberg, Germany Wertheim, Germany	"The Pearl of the Main" walking tour OR Miltenberg Castle hike Walking tour OR Pretzel bakery visit and tasting OR Main River bike tour OR Wertheim Castle Hill hike
6	Würzburg, Germany	Walking tour OR Residenz Palace tour OR Marienberg Fortress hike OR Rothenburg excursion OR Countryside bike tour
7	Bamberg, Germany	UNESCO city walking tour and smoked beer tasting OR Bamberg bike tour OR Tastes of Bamberg
8	Nuremberg, Germany	WWII city tour OR Medieval city tour OR Tastes of Franconia Cruise Main-Danube Canal
9	Regensburg, Germany	UNESCO city walking tour OR Tastes of Bavaria OR Walhalla bike tour
10	Passau, Germany	"City of Three Rivers" walking tour OR Passau bike tour OR Passau Castle hike
11	Melk, Austria Scenic cruising	Benedictine Abbey tour OR Danube bike tour UNESCO Wachau Valley OR Melk to Dürnstein bike tour
	Dürnstein, Austria	Walking tour and wine tasting OR Dürnstein Fortress hike OR Apricots and sweets tasting
12	Vienna, Austria	"Imperial Vienna" tour OR Vienna bike tour Free time
13	Bratislava, Slovakia	"Coronation City" walking tour OR Bratislava Castle hike OR Tastes of Slovakia
14	Budapest, Hungary	"Queen of the Danube" tour OR Castle Hill hike Illuminations cruise
15	Budapest	DISSEMBARKATION

For full details please visit www.amawaterways.eu

SAVE UP TO €1,200pp
BOOK BY 31 DECEMBER 2019*

DATES & FARES

EMBARKATION DATE	EMBARKATION CITY	SHIP NAME	14-NIGHT CRUISE (CAT. E)
May 03	Amsterdam	AmaPrima	€5,981
May 08	Amsterdam	AmaSerena	€6,148
May 17	Budapest	AmaPrima	€6,148
May 31	Amsterdam	AmaPrima	€6,148

Cruise Fares: Fares are per person, based on double occupancy of a Cat. E deluxe outside stateroom with window.

To upgrade to a higher category, please add the following per person:

AMAPRIMA & AMA SERENA

CAT.	DECK	STATEROOM	SQ. M	ADD'L
D	Piano	Window	15	€498
C	Violin	French Balcony	16	€1,665
BB	Violin & Cello	French Balcony	20	€2,498
BA	Cello	French/Outside Balcony	20	€2,832
AB	Violin	French/Outside Balcony	22	€3,165
AA	Cello	French/Outside Balcony	22	€3,498
AA+	Violin	French/Outside Balcony	27	€4,498
Suite	Violin	French/Outside Balcony	33	€5,665

Single Supplement Cruise: Category E and D 25% of per person twin fare; Category CB, CA/C, BB, BA, AB and AA 50% of per person twin fare; AA+ and Suite 100% of per person twin fare. Single Supplements apply to All Land Programmes & Hotel Nights. Please call for details

Deck Plans: See pages 170 - 177 of our 2020 Europe, Asia & Africa Brochure.

Airport Transfers: Amsterdam Airport Schiphol to Ship (or reverse) - €25 per person. Ship to Budapest Ferenc Liszt International Airport (or reverse) - €25 per person.

Land Programmes: Please call for details on pre- and post-cruise land programmes.

Extra hotel nights are available: Please call for prices & availability.

Note: Itinerary is subject to change. For the most up-to-date information, please refer to the itinerary schedule provided with your final documents.

*Book by 31st December 2019 and save up to €1,200 per person on selected sailings. Fares shown do not include savings. Visit www.amawaterways.eu or contact your Travel Agent for full details.



Vienna, Austria



A view around every bend, Rhine Gorge, Germany

GRAND DANUBE

14 NIGHTS | VILSHOFEN, GERMANY TO GIURGIU, ROMANIA (OR REVERSE)



DAILY PROGRAMME

DAY	DESTINATION	ACTIVITIES
1	Vilshofen, Germany	EMBARKATION Exclusive Oktoberfest
2	Passau, Germany	"City of Three Rivers" walking tour OR Passau Castle hike OR Danube bike tour
3	Linz, Austria	"UNESCO City of Media Arts" walking tour OR Full-day Salzburg excursion OR "Cultural Mile" bike tour Half-day afternoon Český Krumlov excursion
4	Scenic cruising Weissenkirchen, Austria	Strudengau and UNESCO Wachau Valley Dürnstein walking tour and Melk Abbey OR Dürnstein Fortress hike OR Apricots and sweets tasting OR Wachau Valley bike tour Evening wine tasting at local winery
5	Vienna, Austria	"Imperial Vienna" tour OR Vienna bike tour
6	Bratislava, Slovakia	"Coronation City" walking tour OR Tastes of Slovakia OR Bratislava Castle hike
7	Budapest, Hungary	"Queen of the Danube" tour OR Castle Hill hike Illuminations cruise
8	Budapest	Pusztá excursion
9	Budapest Mohács, Hungary	Scenic cruising Pécs excursion OR Szekszárd wine tasting OR Mohács bike tour
10	Vukovar, Croatia Ilok, Croatia Novi Sad, Croatia	City tour and Eltz Palace OR Croatian wine tasting "The Athens of Serbia" walking tour OR Novi Sad bike tour OR Fruska Gora National Park hike Evening Petrovaradin Fortress visit
11	Belgrade, Serbia	"The City by Two Rivers" tour Royal Palace and Tito's Memorial tour OR Quburich Brandy tasting OR Belgrade bike tour OR Belgrade Fortress hike
12	Iron Gates	Full-day scenic cruising
13	Vidin, Bulgaria	Baba Vida Fortress and Belogradchik with choice to hike OR Banitsa pastry and yoghurt tasting OR Vidin bike tour
14	Rousse, Bulgaria	Veliko Tarnovo excursion OR Rousse walking tour and Rock-Hewn Churches Bucharest excursion
15	Giurgiu, Romania	DISSEMBARKATION

For full details please visit www.amawaterways.eu

SAVE UP TO €1,200pp
BOOK BY 31 DECEMBER 2019*

DATES & FARES

EMBARKATION DATE	EMBARKATION CITY	SHIP NAME	14-NIGHT CRUISE (CAT. E)
Mar 29	Giurgiu	AmaCerto	€5,147
Apr 12	Vilshofen	AmaCerto	€5,480
Apr 26	Giurgiu	AmaCerto	€5,980
May 03	Vilshofen	AmaMagna	€6,480
May 10	Vilshofen	AmaCerto	€6,313
May 17	Giurgiu	AmaMagna	€6,730
May 24	Giurgiu	AmaCerto	€6,397
May 31	Vilshofen	AmaMagna	€6,730
Jun 07	Vilshofen	AmaCerto	€6,397
Jun 21	Giurgiu	AmaCerto	€6,397
Jul 19	Vilshofen	AmaPrima	€6,397
Aug 02	Giurgiu	AmaPrima	€6,397
Aug 16	Giurgiu	AmaCerto	€6,480
Aug 16	Vilshofen	AmaPrima	€6,480
Aug 30	Vilshofen	AmaPrima	€6,813
Aug 30	Giurgiu	AmaCerto	€6,813
Sep 13	Giurgiu	AmaCerto	€6,897
Sep 13	Vilshofen	AmaPrima	€6,897
Sep 27	Vilshofen	AmaPrima	€6,897
Sep 27	Giurgiu	AmaCerto	€6,897
Oct 11	Giurgiu	AmaCerto	€6,480
Oct 11	Vilshofen	AmaPrima	€6,480
Oct 25	Vilshofen	AmaPrima	€6,147
Oct 25	Giurgiu	AmaCerto	€6,147
Nov 08	Giurgiu	AmaCerto	€5,647

■ Modified Itinerary. Please visit www.amawaterways.eu for detailed itinerary.

Cruise Fares: Fares are per person, based on double occupancy of a Cat. E deluxe outside stateroom with window.

To upgrade to a higher category, please add the following per person:

AMACERTO & AMAPRIMA

CAT.	DECK	STATEROOM	SQ. M	ADD'L
D	Piano	Window	15	€498
C	Violin	French Balcony	16	€1,665
BB	Violin & Cello	French Balcony	20	€2,498
BA	Cello	French/Outside Balcony	20	€2,832
AB	Violin	French/Outside Balcony	22	€3,165
AA	Cello	French/Outside Balcony	22	€3,498
AA+	Violin	French/Outside Balcony	27	€4,498
Suite	Violin	French/Outside Balcony	33	€5,665

AMAMAGNA

CAT.	DECK	STATEROOM	SQ. M	ADD'L
D	Piano	Window	19	€832
AB	Cello	Outside Balcony	23	€3,165
AA	Violin	Outside Balcony	23	€3,498
SB	Cello	Outside Balcony	33	€4,998
SA	Violin	Outside Balcony	33	€5,665
Grand Suite	Violin	Outside Balcony	44	€11,665
Owner's Suite	Violin	Outside Balcony	66	€16,665

Single Supplement Cruise: Category E and D 25% of per person twin fare; Category CB, CA/C, BB, BA, AB and AA 50% of per person twin fare; AA+ and Suite 100% of per person twin fare. AmaMagna Category SB and SA 50% of per person twin fare; Category Grand Suite and Owners Suite 100% of per person twin fare. Single Supplements apply to all Land Programmes & Hotel Nights. Please call for details.

Deck Plans: See pages 170 - 177 of our 2020 Europe, Asia & Africa Brochure.

Airport Transfers: Munich Airport to Ship - €25 per person.

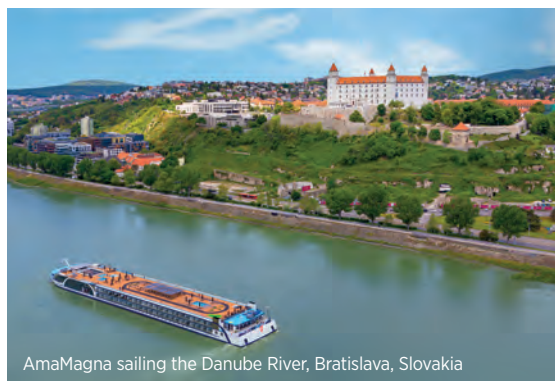
Ship to Bucharest Henri Coandă International Airport - €83 per person.

Land Programmes: Please call for details on pre- and post-cruise land programmes.

Extra hotel nights are available: Please call for prices & availability.

Note: Itinerary is subject to change. For the most up-to-date information, please refer to the itinerary schedule provided with your final documents.

*Book by 31st December 2019 and save up to €1,200 per person on selected sailings. Fares shown do not include savings. Visit www.amawaterways.eu or contact your Travel Agent for full details.



AmaMagna sailing the Danube River, Bratislava, Slovakia

ENTICING DOURO

7 NIGHTS | PORTO, PORTUGAL, ROUNDTrip



DAILY PROGRAMME

DAY	DESTINATION	ACTIVITIES
1	Porto, Portugal	★ EMBARKATION
2	Porto	"City of Bridges" tour with Port wine tasting OR Porto hike with Port wine tasting
	Entre-os-Rios, Portugal	Dinner at a local quinta
3	Régua, Portugal	Lamego tour and Bôlas tasting OR Holy Staircase hike and Bôlas tasting
	Pinhão, Portugal	Local quinta wine tasting
4	Barca d'Alva, Portugal	Castelo Rodrigo tour with tasting of regional fare OR Castelo Rodrigo hike with tasting of regional fare
5	Vega de Terrón, Spain	Salamanca excursion with flamenco show
6	Pinhão	Quinta de Avessada lunch
7	Régua	Mateus Palace and Gardens excursion
	Porto	Free afternoon
8	Porto	⚓ DISEMBARKATION

For full details please visit www.amawaterways.eu



Vineyards along the Douro river

SAVE UP TO €1,200pp
BOOK BY 31 DECEMBER 2019*

DATES & FARES

EMBARKATION DATE	EMBARKATION CITY	SHIP NAME	7-NIGHT CRUISE (CAT. E)
Mar 28	Porto	AmaDouro	€2,824
Apr 04	Porto	AmaDouro	€2,907
Apr 11	Porto	AmaDouro	€2,991
Apr 18	Porto	AmaDouro	€3,074
Apr 25	Porto	AmaDouro	€3,241
May 02	Porto	AmaDouro	€3,407
May 09	Porto	AmaDouro	€3,407
May 16	Porto	AmaDouro	€3,407
May 23	Porto	AmaDouro	€3,407
May 30	Porto	AmaDouro	€3,407
Jun 06	Porto	AmaDouro	€3,407
Jun 13	Porto	AmaDouro	€3,407
Jun 20	Porto	AmaDouro	€3,407
Jun 27	Porto	AmaDouro	€3,407
Jul 04	Porto	AmaDouro	€3,407
Jul 11	Porto	AmaDouro	€3,407
Jul 18	Porto	AmaDouro	€3,407
Jul 25	Porto	AmaDouro	€3,407
Aug 01	Porto	AmaDouro	€3,407
Aug 08	Porto	AmaDouro	€3,407
Aug 15	Porto	AmaDouro	€3,407
Aug 22	Porto	AmaDouro	€3,491
Aug 29	Porto	AmaDouro	€3,574
Sep 05	Porto	AmaDouro	€3,574
Sep 12	Porto	AmaDouro	€3,574
Sep 19	Porto	AmaDouro	€3,574
Sep 26	Porto	AmaDouro	€3,574
Oct 03	Porto	AmaDouro	€3,574
Oct 10	Porto	AmaDouro	€3,491
Oct 17	Porto	AmaDouro	€3,407
Oct 24	Porto	AmaDouro	€3,241
Oct 31	Porto	AmaDouro	€3,157
Nov 07	Porto	AmaDouro	€2,991
Nov 10	Porto	AmaVida	€2,907

Wine Cruise

Cruise Fares: Fares are per person, based on double occupancy of a Cat. E deluxe outside stateroom with window.

To upgrade to a higher category, please add the following per person:

AMADOURO

CAT.	DECK	STATEROOM	SQ. M	ADD'L
D	Douro	Panoramic Window	15	€249
C	Porto	French Balcony	15	€833
B	Lisbon	Outside Balcony	20	€1,249
A	Porto	Outside Balcony	20	€1,499
Suite	Porto	Outside Balcony	30	€2,833

AMAVIDA

CAT.	DECK	STATEROOM	SQ. M	ADD'L
D	Douro	Panoramic Window	15	€249
B	Lisbon	Outside Balcony	20	€1,249
A	Porto	Outside Balcony	20	€1,499
Suite	Porto	Outside Balcony	30	€2,833

Single Supplement Cruise: Category E and D 25% of per person twin fare; Category C, B, and A 50% of per person twin fare; Suite 100% of per person twin fare.

Deck Plans: See pages 178 - 181 of our 2020 Europe, Asia & Africa Brochure.

Airport Transfers: Francisco Sá Carneiro Airport Porto to Ship - €25 per person. Ship to Francisco Sá Carneiro Airport Porto - €25 per person.

Land Programmes: Please call for details on pre- and post-cruise land programmes.

Extra hotel nights are available: Please call for prices & availability.

Note: Itinerary is subject to change. For the most up-to-date information, please refer to the itinerary schedule provided with your final documents.

*Book by 31st December 2019 and save up to €1,200 per person on selected sailings. Fares shown do not include savings. Visit www.amawaterways.eu or contact your Travel Agent for full details.



Salamanca Cathedral

FLAVOURS OF PORTUGAL & SPAIN

10 NIGHTS | MADRID, SPAIN TO PORTO, PORTUGAL (OR REVERSE)



DAILY PROGRAMME

DAY	DESTINATION	ACTIVITIES
1	Madrid, Spain	Hotel check-in
2	Madrid	City tour
3	Madrid	Toledo excursion
4	Madrid	Transfer to Salamanca
	Salamanca, Spain	Full-day excursion with flamenco show Transfer to Vega de Terrón
	Vega de Terrón, Spain	★ EMBARKATION
5	Vega de Terrón	Castelo Rodrigo tour with tasting of regional fare OR Castelo Rodrigo hike with tasting of regional fare
	Barca d'Alva, Portugal	Port wine tasting
6	Pinhão, Portugal	Mateus Palace and gardens Wine tasting and Quinta de Aveseda lunch
7	Régua, Portugal	Lamego tour and Bôlas tasting OR Holy Staircase hike and Bôlas tasting
8	Caldas de Aregos, Portugal	Caldas de Aregos Vineyard hike
	Entre-os-Rios, Portugal	Scenic cruising Special dinner at local quinta
9	Porto, Portugal	"City of Bridges" tour and Port wine tasting OR Porto hike with Port wine tasting
10	Porto	Free time
11	Porto	⚓ DISEMBARKATION

For full details please visit www.amawaterways.eu



AmaVida cruising in Porto, Portugal

SAVE UP TO €1,200pp
BOOK BY 31 DECEMBER 2019*

DATES & FARES

START DATE	START CITY	SHIP NAME	10-NIGHT CRUISE/ LAND (CAT. E)
Mar 31	Porto	AmaVida	€3,491
Apr 04	Madrid	AmaVida	€3,574
Apr 14	Porto	AmaVida	€3,657
Apr 18	Madrid	AmaVida	€3,741
Apr 28	Porto	AmaVida	€3,907
May 02	Madrid	AmaVida	€3,991
May 16	Madrid	AmaVida	€4,074
May 26	Porto	AmaVida	€4,074
May 30	Madrid	AmaVida	€4,074
Jun 13	Madrid	AmaVida	€4,074
Jun 23	Porto	AmaVida	€4,074
Jun 27	Madrid	AmaVida	€4,074
Jul 11	Madrid	AmaVida	€4,074
Jul 21	Porto	AmaVida	€4,074
Jul 25	Madrid	AmaVida	€4,074
Aug 04	Porto	AmaVida	€4,074
Aug 08	Madrid	AmaVida	€4,074
Aug 22	Madrid	AmaVida	€4,157
Sep 01	Porto	AmaVida	€4,241
Sep 05	Madrid	AmaVida	€4,241
Sep 19	Madrid	AmaVida	€4,241
Sep 29	Porto	AmaVida	€4,241
Oct 03	Madrid	AmaVida	€4,241
Oct 13	Porto	AmaVida	€4,157
Oct 17	Madrid	AmaVida	€4,074
Oct 27	Porto	AmaVida	€3,907
Oct 31	Madrid	AmaVida	€3,824

Wine Cruise

Cruise Fares: Fares are per person, based on double occupancy of a Cat. E deluxe outside stateroom with window.

To upgrade to a higher category, please add the following per person:

AMAVIDA

CAT.	DECK	STATEROOM	SQ. M	ADD'L
D	Douro	Panoramic Window	15	€249
B	Lisbon	Outside Balcony	20	€1,249
A	Porto	Outside Balcony	20	€1,499
Suite	Porto	Outside Balcony	30	€2,833

Single Supplement Cruise: Category E and D 25% of per person twin fare; Category C, B, and A 50% of per person twin fare; Suite 100% of per person twin fare.

Deck Plans: See pages 178 - 181 of our 2020 Europe, Asia & Africa Brochure.

Airport Transfers: Madrid-Barajas Adolfo Suárez Airport to Ship (or reverse) - €25 per person. Ship to Francisco Sá Carneiro Airport Porto (or reverse) - €25 per person.

Land Programmes: Please call for details on pre- and post-cruise land programmes.

Extra hotel nights are available: Please call for prices & availability.

Note: Itinerary is subject to change. For the most up-to-date information, please refer to the itinerary schedule provided with your final documents.

*Book by 31st December 2019 and save up to €1,200 per person on selected sailings. Fares shown do not include savings. Visit www.amawaterways.eu or contact your Travel Agent for full details.



Castelo Rodrigo, Portugal

PARIS & NORMANDY

7 NIGHTS | PARIS, FRANCE, ROUNDTrip



DAILY PROGRAMME

DAY	DESTINATION	ACTIVITIES
1	Paris, France	☀ EMBARKATION
2	Les Andelys, France	Château Gaillard OR Les Andelys bike tour OR Château Gaillard hike Scenic cruising
3	Le Havre, France	Honfleur excursion OR Full-day Honfleur & Pays d'Auge Afternoon Le Havre city tour OR Le Havre bike tour
4	Le Havre	Full day Normandy British & Canadian Landing Beaches OR Full day Normandy U.S. Landing Beaches
	Caudebec-en-Caux, France	OR Afternoon Route des Abbayes OR Afternoon Seine Museum
5	Rouen, France	Medieval Rouen walking tour OR Rouen bike tour Lyons-la-Forêt excursion OR Tastes of Normandy
6	Vernon, France	Scenic cruising Monet's home and gardens in Giverny OR Château de Bizy tour OR Giverny bike tour
	La Roche-Guyon, France	Free evening
7	Conflans, France	Morning Artist's walk of Auvers-sur-Oise OR Saint-Germain-des-Prés OR Conflans bike tour
8	Paris	⚓ DISEMBARKATION

For full details please visit www.amawaterways.eu



Monet's Gardens, Giverny, France

SAVE UP TO €1,200pp
BOOK BY 31 DECEMBER 2019*

DATES & FARES

EMBARKATION DATE	EMBARKATION CITY	SHIP NAME	7-NIGHT CRUISE (CAT. E)
Mar 19	Paris	AmaLyra	€2,741
Mar 26	Paris	AmaLyra	€2,824
Apr 02	Paris	AmaLyra	€2,991
Apr 09	Paris	AmaLyra	€3,157
Apr 16	Paris	AmaLyra	€3,241
Apr 23	Paris	AmaLyra	€3,324
Apr 30	Paris	AmaLyra	€3,407
May 07	Paris	AmaLyra	€3,491
May 14	Paris	AmaLyra	€3,491
May 21	Paris	AmaLyra	€3,491
Jun 04	Paris	AmaLyra	€3,491
Jun 18	Paris	AmaLyra	€3,491
Jul 09	Paris	AmaLyra	€3,491
Jul 23	Paris	AmaLyra	€3,491
Jul 30	Paris	AmaLyra	€3,491
Aug 13	Paris	AmaLyra	€3,491
Aug 20	Paris	AmaLyra	€3,491
Aug 27	Paris	AmaLyra	€3,574
Sep 03	Paris	AmaLyra	€3,574
Sep 24	Paris	AmaLyra	€3,574
Oct 01	Paris	AmaLyra	€3,574
Oct 15	Paris	AmaLyra	€3,407
Oct 22	Paris	AmaLyra	€3,324
Oct 29	Paris	AmaLyra	€3,157
Nov 05	Paris	AmaLyra	€2,991

Wine Cruise

Cruise Fares: Fares are per person, based on double occupancy of a Cat. E deluxe outside stateroom with window.

To upgrade to a higher category, please add the following per person:

AMALYRA

CAT.	DECK	STATEROOM	SQ. M	ADD'L
D	Piano	Window	16	€249
C	Violin & Cello	French Balcony	16	€833
B	Violin & Cello	French Balcony	16	€999
A	Violin	French Balcony	16	€1,083
A+	Violin	French Balcony	21	€1,916
Suite	Violin	French Balcony	24	€2,083

Single Supplement Cruise: Category E and D 25% of per person twin fare; Category C, B, and A 50% of per person twin fare; Suite 100% of per person twin fare.

Deck Plans: See pages 176 - 177 of our 2020 Europe, Asia & Africa Brochure.

Airport Transfers: Paris Charles de Gaulle Airport to Ship - €25 per person. Ship to Paris Charles de Gaulle Airport - €25 per person.

Land Programmes: Please call for details on pre- and post-cruise land programmes.

Extra hotel nights are available: Please call for prices & availability.

Note: Itinerary is subject to change and can be booked as cruise only. For the most up-to-date information, please refer to the itinerary schedule provided with your final documents.

*Book by 31st December 2019 and save up to €1,200 per person on selected sailings. Fares shown do not include savings. Visit www.amawaterways.eu or contact your Travel Agent for full details.



Les Andelys, France

COLOURS OF PROVENCE

7 NIGHTS | LYON, FRANCE TO ARLES, FRANCE (OR REVERSE)



DAILY PROGRAMME

DAY	DESTINATION	ACTIVITIES
1	Lyon, France	★ EMBARKATION
2	Lyon	City tour Lyon bike tour OR Free time
3	Vienne, France	Beaujolais excursion and tasting Free evening
4	Vienne	"Footsteps of Ancient Romans" walking tour OR ViaRhôna bike tour OR Mount Pipet hike
5	Tournon, France	Steam train ride OR Red wine and chocolate tasting OR Tain l'Hermitage hike and wine tasting OR Bike tour
6	Avignon, France	Walking tour and Papal Palace OR Pont du Gard OR Tastes of Avignon Grignan excursion and truffle farm visit OR Avignon bike tour Avignon Illuminations cruise
7	Arles, France	Les Baux and olive farm excursion OR Van Gogh Asylum and Carrières de Lumières OR Camargue and Aigues-Mortes Arles walking tour OR Van Gogh walking tour OR Arles bike tour
8	Arles	⚓ DISEMBARKATION

For full details please visit www.amawaterways.eu

The inspiring lavender fields of Provence, France

SAVE UP TO €1,200pp
BOOK BY 31 DECEMBER 2019^

DATES & FARES

EMBARKATION DATE	EMBARKATION CITY	SHIP NAME	7-NIGHT CRUISE (CAT. E)
Mar 19	Lyon	AmaCello	€2,741
Mar 26	Arles	AmaCello	€2,824
Apr 02	Lyon	AmaCello	€2,991
Apr 09	Arles	AmaCello	€3,157
Apr 16	Lyon	AmaCello	€3,241
Apr 23	Arles	AmaCello	€3,324
Apr 30	Lyon	AmaCello	€3,407
May 07	Arles	AmaCello	€3,491
Jun 04	Arles	AmaCello	€3,491
Jun 25	Lyon	AmaCello	€3,491
Jul 02	Arles	AmaCello	€3,491
Jul 16	Arles	AmaCello	€3,491
Jul 23	Lyon	AmaCello	€3,491
Jul 30	Arles	AmaCello	€3,491
Aug 06	Lyon	AmaCello	€3,491
Aug 13	Arles	AmaCello	€3,491
Aug 20	Lyon	AmaCello	€3,491
Aug 27	Arles	AmaCello	€3,574
Sep 03	Lyon	AmaCello	€3,574
Sep 24	Arles	AmaCello	€3,574
Oct 08	Arles	AmaCello	€3,491
Oct 15	Lyon	AmaCello	€3,407
Oct 22	Arles	AmaCello	€3,324
Oct 29	Lyon	AmaCello	€3,157
Nov 05	Arles	AmaCello	€2,991
Nov 12	Lyon	AmaCello	€2,907

Wine Cruise

Cruise Fares: Fares are per person, based on double occupancy of a Cat. E deluxe outside stateroom with window.**To upgrade to a higher category, please add the following per person:**

AMACELLO

CAT.	DECK	STATEROOM	SQ. M	ADD'L
D	Piano	Window	16	€249
C	Violin & Cello	French Balcony	16	€833
B	Violin & Cello	French Balcony	16	€999
A	Violin	French Balcony	16	€1,083
Suite	Violin	French Balcony	24	€2,083

Single Supplement Cruise: Category E and D 25% of per person twin fare; Category C, B, and A 50% of per person twin fare; Suite 100% of per person twin fare.**Deck Plans:** See pages 176 - 177 of our 2020 Europe, Asia & Africa Brochure.**Airport Transfers:** Lyon-Saint Exupéry Airport to Ship - €25 per person. Ship to Marseille Provence Airport - €108 per person.**Land Programmes:** Please call for details on pre- and post-cruise land programmes.**Extra hotel nights are available:** Please call for prices & availability.**Note:** Itinerary is subject to change. For the most up-to-date information, please refer to the itinerary schedule provided with your final documents.^ Book by 31st December 2019 and save up to €1,200 per person on selected sailings. Fares shown do not include savings. Visit www.amawaterways.eu or contact your Travel Agent for full details.

Avignon, France



Wine tasting at a local winery

TASTE OF BORDEAUX

7 NIGHTS | BORDEAUX, FRANCE, ROUNDTrip



DAILY PROGRAMME

DAY	DESTINATION	ACTIVITIES
1	Bordeaux, France	☼ EMBARKATION
2	Bordeaux Libourne, France	Morning scenic cruising Saint-Émilion excursion and Grand Cru Classé wine tasting OR Saint-Émilion bike tour and wine tasting OR Château de Vayres
3	Libourne Blaye, France	French country market visit with tastings OR Libourne bike tour OR Vineyard hike Free evening
4	Blaye Bourg, France	Citadel visit OR Blaye bike tour Blaye to Bourg bike tour Bourg walking tour, Carriage Museum and exclusive wine festival
5	Pauillac, France	Medoc Grand Cru Classé wine tasting and scenic vineyard tour
6	Cadillac, France Bordeaux	Roquetaillade Castle with Sauternes wine tasting Illuminations cruise
7	Bordeaux	UNESCO city tour and Wine Museum OR Bordeaux bike tour
8	Bordeaux	⚓ DISEMBARKATION

For full details please visit www.amawaterways.eu



Dordogne river, Bordeaux, France

SAVE UP TO €1,200pp

BOOK BY 31 DECEMBER 2019^

DATES & FARES

EMBARKATION DATE	EMBARKATION CITY	SHIP NAME	7-NIGHT CRUISE (CAT. E)
Mar 19	Bordeaux	AmaDolce	€2,741
Apr 02	Bordeaux	AmaDolce	€2,991
Apr 16	Bordeaux	AmaDolce	€3,241
Apr 23	Bordeaux	AmaDolce	€3,324
Apr 30	Bordeaux	AmaDolce	€3,407
May 07	Bordeaux	AmaDolce	€3,491
May 14	Bordeaux	AmaDolce	€3,491
Jun 04	Bordeaux	AmaDolce	€3,491
Jun 11	Bordeaux	AmaDolce	€3,491
Jun 18	Bordeaux	AmaDolce	€3,491
Jun 25	Bordeaux	AmaDolce	€3,491
Jul 02	Bordeaux	AmaDolce	€3,491
Jul 09	Bordeaux	AmaDolce	€3,491
Jul 16	Bordeaux	AmaDolce	€3,491
Jul 23	Bordeaux	AmaDolce	€3,491
Jul 30	Bordeaux	AmaDolce	€3,491
Aug 06	Bordeaux	AmaDolce	€3,491
Aug 13	Bordeaux	AmaDolce	€3,491
Aug 20	Bordeaux	AmaDolce	€3,491
Aug 27	Bordeaux	AmaDolce	€3,574
Sep 03	Bordeaux	AmaDolce	€3,574
Sep 10	Bordeaux	AmaDolce	€3,574
Sep 17	Bordeaux	AmaDolce	€3,574
Oct 01	Bordeaux	AmaDolce	€3,574
Oct 08	Bordeaux	AmaDolce	€3,491
Oct 15	Bordeaux	AmaDolce	€3,407
Oct 22	Bordeaux	AmaDolce	€3,324
Oct 29	Bordeaux	AmaDolce	€3,157
Nov 05	Bordeaux	AmaDolce	€2,991
Nov 12	Bordeaux	AmaDolce	€2,907

Wine Cruise

Cruise Fares: Fares are per person, based on double occupancy of a Cat. E deluxe outside stateroom with window.

To upgrade to a higher category, please add the following per person:
AMADOLCE

CAT.	DECK	STATEROOM	SQ. M	ADD'L
D	Piano	Window	16	€249
C	Violin & Cello	French Balcony	16	€833
B	Violin & Cello	French Balcony	16	€999
A	Violin	French Balcony	16	€1,083
A+	Violin	French Balcony	21	€1,916
Suite	Violin	French Balcony	24	€2,083

Single Supplement Cruise: Category E and D 25% of per person twin fare; Category C, B, and A 50% of per person twin fare; Suite 100% of per person twin fare.

Deck Plans: See pages 176 - 177 of our 2020 Europe, Asia & Africa Brochure.

Airport Transfers: Bordeaux-Mérignac Airport to Ship - €38 per person. Ship to Bordeaux-Mérignac Airport - €38 per person.

Land Programmes: Please call for details on pre- and post-cruise land programmes.

Extra hotel nights are available: Please call for prices & availability.

Note: Itinerary is subject to change. For the most up-to-date information, please refer to the itinerary schedule provided with your final documents.

^Book by 31st December 2019 and save up to €1,200 per person on selected sailings. Fares shown do not include savings. Visit www.amawaterways.eu or contact your Travel Agent for full details.



Enchanting Saint-Émilion, France

CHRISTMAS MARKETS ON THE RHINE

7 NIGHTS | AMSTERDAM, THE NETHERLANDS TO BASEL, SWITZERLAND (OR REVERSE)



DAILY PROGRAMME

DAY	DESTINATION	ACTIVITIES
1	Amsterdam, The Netherlands	EMBARKATION
2	Amsterdam	Canal cruise Scenic cruising out of Amsterdam
3	Cologne, Germany	"Holy City" tour with cathedral and Christmas Market OR Cologne bike tour OR Kölsch beer tasting
4	Rhine Gorge, Rudesheim, Germany	Castles along the Rhine scenic cruising Wine tasting OR Schloss Johannisberg bike tour OR Vineyard hike Christmas Market Siegfried's Mechanical Musical Museum OR Rudesheimer coffee
5	Ludwigshafen, Germany	"Romantic Heidelberg" excursion and Christmas Market OR "Secrets of Speyer" tour and Christmas Market OR Heidelberg Philosopher's Path hike
6	Strasbourg, France	"The Gem of the Alsace" tour and Christmas Market OR Strasbourg bike tour Gengenbach Christmas Market and Advent calendar
7	Breisach, Germany	Riquewihr walking tour and Christmas Market OR Freiburg excursion with Christmas Market OR Breisach wine country bike tour
8	Basel, Switzerland	DISEMBARKATION

For full details please visit www.amawaterways.eu



Cologne Christmas Market, Germany

SAVE UP TO €1,200pp
BOOK BY 31 DECEMBER 2019*

DATES & FARES

EMBARKATION DATE	EMBARKATION CITY	SHIP NAME	7-NIGHT CRUISE (CAT. E)
Nov 22	Amsterdam	AmaMora	€2,741
Nov 23	Basel	AmaStella	€2,741
Nov 23	Amsterdam	AmaKristina	€2,741
Nov 25	Basel	AmaSiena	€2,824
Nov 29	Basel	AmaMora	€2,824
Nov 30	Amsterdam	AmaStella	€2,907
Nov 30	Basel	AmaKristina	€2,907
Dec 02	Amsterdam	AmaKristina	€2,907
Dec 06	Amsterdam	AmaMora	€2,907
Dec 07	Basel	AmaStella	€2,907
Dec 07	Amsterdam	AmaKristina	€2,907
Dec 09	Basel	AmaSiena	€2,907
Dec 13	Basel	AmaMora	€2,907
Dec 14	Amsterdam	AmaStella	€2,907
Dec 14	Basel	AmaKristina	€2,907
Dec 16	Amsterdam	AmaSiena	€2,907
Dec 20	Amsterdam	AmaMora	€2,907
Dec 21	Basel	AmaStella	€2,907
Dec 21	Amsterdam	AmaKristina	€2,907

Christmas Markets: Most Christmas Markets open during the last week of November until approximately Dec 22. Check with each country's tourist office for more information.

Cruise Fares: Fares are per person, based on double occupancy of a Cat. E deluxe outside stateroom with window.

To upgrade to a higher category, please add the following per person:

AMAKRISTINA, AMAMORA, AMSIENA & AMASTELLA

CAT.	DECK	STATEROOM	SQ. M	ADD'L
D	Piano	Window	15	€249
CB	Violin	French Balcony	14	€583
CA	Violin & Cello	French Balcony	16	€833
BB	Cello	French/Outside Balcony	20	€1,249
BA	Violin	French/Outside Balcony	20	€1,416
AB	Cello	French/Outside Balcony	22	€1,583
AA	Violin	French/Outside Balcony	22	€1,749
Suite	Violin	French/Outside Balcony	33	€2,833

Single Supplement Cruise: Category E and D 25% of per person twin fare; Category CB, CA, BB, BA, AB and AA 50% of per person twin fare; Suite 100% of per person twin fare. Single Supplements apply to all Land Programmes & Hotel Nights. Please call for details.

Deck Plans: See pages 170 - 177 of our 2020 Europe, Asia & Africa Brochure.

Airport Transfers: Amsterdam Airport Schiphol to Ship - €25 per person. Ship to EuroAirport Basel Mulhouse Freiburg - €50 per person.

Land Programmes: Please call for details on pre- and post-cruise land programmes.

Extra hotel nights are available: Please call for prices & availability.

Note: Itinerary is subject to change. For the most up-to-date information, please refer to the itinerary schedule provided with your final documents.

*Book by 31st December 2019 and save up to €1,200 per person on selected sailings. Fares shown do not include savings. Visit www.amawaterways.eu or contact your Travel Agent for full details.



Freiburg Christmas Market, Germany



Strasbourg Christmas Market, France

CHRISTMAS MARKETS ON THE DANUBE

7 NIGHTS | BUDAPEST, HUNGARY TO VILSHOFEN, GERMANY (OR REVERSE)



DAILY PROGRAMME

DAY	DESTINATION	ACTIVITIES
1	Budapest, Hungary	☀ EMBARKATION Illuminations cruise
2	Budapest	"Queen of the Danube" tour and Christmas Market Vörösmarty Square
3	Bratislava, Slovakia	Coronation city walking tour with Christmas Market visit OR Tastes of Slovakia OR Bratislava Castle hike
	Vienna, Austria	Rathaus Christmas Markets
4	Vienna	"Imperial Vienna" tour with Town Hall Christmas Market OR Alte Donau bike tour Artisan and Schönbrunn illuminated Christmas Markets
5	Weissenkirchen, Austria	Dürnstein walking tour and wine tasting Dürnstein excursion with apricot and sweets tastings OR Weissenkirchen to Melk bike tour
	Melk, Austria	Benedictine Abbey visit
6	Linz, Austria	"UNESCO City of Media Arts" walking tour and Christmas Market OR Full-day Salzburg excursion with Hellbrunn Palace Christmas Markets OR "Cultural Mile" bike tour OR Cesky Krumlov excursion with Christmas Markets
7	Passau, Germany	"City of Three Rivers" walking tour and Christmas Markets OR Passau hike OR Passau bike tour
	Vilshofen, Germany	Exclusive Oktoberfest celebration
8	Vilshofen	⚓ DISEMBARKATION

For full details please visit www.amawaterways.eu



Shop for unique gifts

CHRISTMAS

SAVE UP TO €1,200pp
BOOK BY 31 DECEMBER 2019*

DATES & FARES

EMBARKATION DATE	EMBARKATION CITY	SHIP NAME	7-NIGHT CRUISE (CAT. E)
Nov 22	Vilshofen	AmaCerto	€2,741
Nov 22	Budapest	AmaMagna	€2,907
Nov 27	Budapest	AmaSonata	€2,824
Nov 27	Vilshofen	AmaSerena	€2,824
Nov 29	Budapest	AmaPrima	€2,824
Nov 29	Vilshofen	AmaMagna	€2,991
Dec 04	Vilshofen	AmaSonata	€2,907
Dec 04	Budapest	AmaSerena	€2,907
Dec 06	Vilshofen	AmaPrima	€2,907
Dec 06	Budapest	AmaMagna	€3,074
Dec 11	Budapest	AmaSonata	€2,907
Dec 11	Vilshofen	AmaSerena	€2,907
Dec 12	Budapest	AmaLea	€2,907
Dec 13	Budapest	AmaPrima	€2,907
Dec 13	Vilshofen	AmaMagna	€3,074
Dec 18	Vilshofen	AmaSonata	€2,907
Dec 18	Budapest	AmaSerena	€2,907
Dec 20	Vilshofen	AmaPrima	€2,907
Dec 20	Budapest	AmaMagna	€3,074

■ Modified Itinerary. Please visit www.amawaterways.eu for detailed itinerary.

Christmas Markets: Most Christmas Markets open during the last week of November until approximately Dec 22. Check with each country's tourist office for more information.

Cruise Fares: Fares are per person, based on double occupancy of a Cat. E deluxe outside stateroom with window.

To upgrade to a higher category, please add the following per person:

AMACERTO, AMALEA, AMAPRIMA, AMASERENA & AMASONATA

CAT.	DECK	STATEROOM	SQ. M	ADD'L
D	Piano	Window	15	€249
CB	Violin	French Balcony	14	€583
CA/C	Violin & Cello	French Balcony	16	€833
BB	Cello	French/Outside Balcony	20	€1,249
BA	Violin	French/Outside Balcony	20	€1,416
AB	Cello	French/Outside Balcony	22	€1,583
AA	Violin	French/Outside Balcony	22	€1,749
AA+	Violin	French/Outside Balcony	27	€2,249
Suite	Violin	French/Outside Balcony	33	€2,833

AMAMAGNA

CAT.	DECK	STATEROOM	SQ. M	ADD'L
D	Piano	Window	19	€416
AB	Cello	Outside Balcony	23	€1,583
AA	Violin	Outside Balcony	23	€1,749
SB	Cello	Outside Balcony	33	€2,499
SA	Violin	Outside Balcony	33	€2,833
Grand Suite	Violin	Outside Balcony	44	€5,833
Owner's Suite	Violin	Outside Balcony	66	€8,333

Single Supplement Cruise: Category E and D 25% of per person twin fare; Category CB, CA/C, BB, BA, AB and AA 50% of per person twin fare; AA+ and Suite 100% of per person twin fare. AmaMagna Category SB and SA 50% of per person twin fare; Category Grand Suite and Owners Suite 100% of per person twin fare. Single Supplements apply to all Land Programmes & Hotel Nights. Please call for details.

Deck Plans: See pages 170 - 177 of our 2020 Europe, Asia & Africa Brochure.

Airport Transfers: Budapest Ferenc Liszt International Airport to Ship - €25 per person. Ship to Munich Airport - €25 per person.

Land Programmes: Please call for details on pre- and post-cruise land programmes.

Extra hotel nights are available: Please call for prices & availability.

Note: Itinerary is subject to change. For the most up-to-date information, please refer to the itinerary schedule provided with your final documents.

*Book by 31st December 2019 and save up to €1,200 per person on selected sailings. Fares shown do not include savings. Visit www.amawaterways.eu or contact your Travel Agent for full details.



Vörösmarty Square Christmas Market, Budapest, Hungary

ICONIC CHRISTMAS MARKETS

7 NIGHTS | BUDAPEST, HUNGARY TO NUREMBERG, GERMANY
(OR REVERSE)



DAILY PROGRAMME

DAY	DESTINATION	ACTIVITIES
1	Budapest, Hungary	EMBARKATION Illuminations cruise
2	Budapest	"Queen of the Danube" tour and Vörösmarty Square Christmas Market
3	Vienna, Austria	"Imperial Vienna" tour with Town Hall Christmas Market OR Alte Donau bike tour Schönbrunn and illuminated Christmas Markets
4	Melk, Austria	Benedictine Abbey visit OR Melk bike tour
5	Passau, Germany	"City of Three Rivers" walking tour and Christmas Market OR Danube bike tour OR Salzburg excursion including Hellbrunn Palace Christmas Market
6	Regensburg, Germany	UNESCO city tour, Thurn and Taxis Christmas Market OR Tastes of Bavaria OR Walhalla bike tour
7	Nuremberg, Germany	Cruise Main-Danube Canal Nuremberg city tour OR Tastes of Franconia Nuremberg Christmas Market
8	Nuremberg	DISEMBARKATION

For full details please visit www.amawaterways.eu



Christmas Market, Vienna, Austria

SAVE UP TO €1,200pp
BOOK BY 31 DECEMBER 2019^

DATES & FARES

EMBARKATION DATE	EMBARKATION CITY	SHIP NAME	7-NIGHT CRUISE (CAT. E)
Nov 22	Nuremberg	AmaPrima	€2,741
Nov 23	Nuremberg	AmaViola	€2,741
Nov 28	Budapest	AmaLea	€2,824
Nov 29	Budapest	AmaCerto	€2,824
Nov 30	Budapest	AmaViola	€2,907
Dec 05	Nuremberg	AmaLea	€2,907
Dec 06	Nuremberg	AmaCerto	€2,907
Dec 07	Nuremberg	AmaViola	€2,907
Dec 13	Budapest	AmaCerto	€2,907
Dec 14	Budapest	AmaViola	€2,907
Dec 20	Nuremberg	AmaCerto	€2,907
Dec 21	Nuremberg	AmaViola	€2,907

Christmas Markets: Most Christmas Markets open during the last week of November until approximately Dec 22. Check with each country's tourist office for more information.

Cruise Fares: Fares are per person, based on double occupancy of a Cat. E deluxe outside stateroom with window.

To upgrade to a higher category, please add the following per person:

AMACERTO, AMALEA, AMAPRIMA & AMAVIOLA

CAT.	DECK	STATEROOM	SQ. M	ADD'L
D	Piano	Window	15	€249
CB	Violin	French Balcony	14	€583
CA/C	Violin & Cello	French Balcony	16	€833
BB	Cello	French/Outside Balcony	20	€1,249
BA	Violin	French/Outside Balcony	20	€1,416
AB	Cello	French/Outside Balcony	22	€1,583
AA	Violin	French/Outside Balcony	22	€1,749
AA+	Violin	French/Outside Balcony	27	€2,249
Suite	Violin	French/Outside Balcony	33	€2,833

Single Supplement Cruise: Category E and D 25% of per person twin fare; Category CB, CA/C, BB, BA, AB and AA 50% of per person twin fare; AA+ and Suite 100% of per person twin fare. Single Supplements apply to all Land Programmes & Hotel Nights. Please call for details.

Deck Plans: See pages 170 - 177 of our 2020 Europe, Asia & Africa Brochure.

Airport Transfers: Budapest Ferenc Liszt International Airport to Ship - €29 per person. Ship to Albrecht Dürer Airport Nuremberg - €29 per person or Ship to Munich Airport - €111 per person.

Land Programmes: Please call for details on pre- and post-cruise land programmes.

Extra hotel nights are available: Please call for prices & availability.

Note: Itinerary is subject to change and can be booked as cruise only. For the most up-to-date information, please refer to the itinerary schedule provided with your final documents.

^Book by 31st December 2019 and save up to €1,200 per person on selected sailings. Fares shown do not include savings. Visit www.amawaterways.eu or contact your Travel Agent for full details.



Old town Christmas Market, Prague, Czech Republic

CHARMS OF THE MEKONG

15 NIGHTS | HO CHI MINH CITY, VIETNAM TO HANOI, VIETNAM

2 nights Ho Chi Minh City, 7-night Vietnam to Cambodia cruise,
2 nights Siem Reap, 3 nights Hanoi and 1 night Ha Long Bay



DAILY PROGRAMME

DAY	DESTINATION	ACTIVITIES
1	Ho Chi Minh City, Vietnam	Hotel check-in
2	Ho Chi Minh City	City tour and Chu Chi Tunnels
3	Ho Chi Minh City	Morning visit Ben Thanh Market
		☀ EMBARKATION
		Welcome Dinner
4	Cai Be, Vietnam	Local boat ride Visit local workshops Historic Kiet Old House
	Sa Dec, Vietnam	Local boat ride to Sa Dec Visit to local market and temple
5	Tan Chau, Vietnam	Trishaw ride to craftsmen's workshops OR Local village
	Border Crossing	Border Crossing from Vietnam to Cambodia
6	Phnom Penh, Cambodia	Killing Fields and Genocide Museum OR Central Market Royal Palace and National Museum
7	Oudong, Cambodia	Buddhist Blessing Ceremony
	Kampong Tralach, Cambodia	Oxcart ride
	Phnom Penh	Tuk tuk orientation tour
8	Oknhatey Village, Cambodia	Visit Silk Village and local school
9	Angkor Ban, Cambodia	Walking tour
	Kampong Cham, Cambodia	Phnom Pros & Phnom Srei "Twin Mountain" visit
10	Kampong Cham	⚓ DISEMBARKATION
	Siem Reap, Cambodia	Coach transfer to Siem Reap Hotel check-in Ta Prohm Temple
11	Siem Reap	Angkor Wat and Banteay Srei
12	Siem Reap	Angkor Thom Flight to Hanoi Hotel check-in
	Hanoi, Vietnam	City tour and rickshaw ride Water Puppet Show
13	Hanoi	Coach transfer to Ha Long Bay Bay excursion Overnight cruise
14	Ha Long Bay, Vietnam	Transfer to Hanoi Hotel check-in
15	Ha Long Bay	Hotel check-out
16	Hanoi	

For full details please visit www.amawaterways.eu

MEKONG

SAVE UP TO €1,000pp
BOOK BY 31 DECEMBER 2019*

DATES & FARES

EMBARKATION DATE	SHIP NAME	11 NIGHT CRUISE/LAND STARTS HO CHI MINH CITY		15 NIGHT CRUISE/LAND STARTS HO CHI MINH CITY	
		PACKAGE START DATE	11 NIGHT CRUISE/LAND	PACKAGE START DATE	15 NIGHT CRUISE/LAND
2020					
Jan 06	AmaDara	Jan 04	€3,657	Jan 04	€4,874
Jan 20	AmaDara	Jan 18	€3,657	Jan 18	€4,874
Feb 03	AmaDara	Feb 01	€3,657	Feb 01	€4,874
Feb 17	AmaDara	Feb 15	€3,657	Feb 15	€4,874
Mar 02	AmaDara	Feb 29	€3,657	Feb 29	€4,874
Mar 16	AmaDara	Mar 14	€3,490	Mar 14	€4,707
Mar 30	AmaDara	Mar 28	€3,323	Mar 28	€4,540
Apr 13	AmaDara	Apr 11	€3,157	Apr 11	€4,374
Aug 03	AmaDara	Aug 01	€3,073	Aug 01	€4,290
Aug 17	AmaDara	Aug 15	€3,073	Aug 15	€4,290
Aug 31	AmaDara	Aug 29	€3,240	Aug 29	€4,457
Sep 14	AmaDara	Sep 12	€3,407	Sep 12	€4,624
Sep 28	AmaDara	Sep 26	€3,573	Sep 26	€4,790
Oct 12	AmaDara	Oct 10	€3,657	Oct 10	€4,874
Oct 26	AmaDara	Oct 24	€3,657	Oct 24	€4,874
Nov 09	AmaDara	Nov 07	€3,657	Nov 07	€4,874
Nov 23	AmaDara	Nov 21	€3,657	Nov 21	€4,874
Dec 07	AmaDara	Dec 05	€3,657	Dec 05	€4,874
Dec 21	AmaDara	Dec 19	€3,657	Dec 19	€4,874
2021					
Jan 04	AmaDara	Jan 02	€3,740	Jan 02	€4,957
Jan 18	AmaDara	Jan 16	€3,740	Jan 16	€4,957
Feb 01	AmaDara	Jan 30	€3,740	Jan 30	€4,957
Feb 15	AmaDara	Feb 13	€3,740	Feb 13	€4,957
Mar 01	AmaDara	Feb 27	€3,740	Feb 27	€4,957
Mar 15	AmaDara	Mar 13	€3,573	Mar 13	€4,790
Mar 29	AmaDara	Mar 27	€3,407	Mar 27	€4,624
Apr 12	AmaDara	Apr 10	€3,240	Apr 10	€4,457

Cruise/Land Fares: Fares are per person, based on double occupancy of a Cat. C deluxe outside stateroom with balcony.

To upgrade to a higher category, please add the following per person:

AMADARA

CAT.	DECK	STATEROOM	SQ. M	ADD'L
B	Sa Dec, Saigon & Tonle	French/Outside Balcony	23	€583
A	Saigon	French/Outside Balcony	23	€833
S	Sa Dec	French/Outside Balcony	34	€1,249
LS	Sa Dec	French/Outside Balcony	47	€2,416

Single Supplement Cruise: Category C 25% of per person twin fare; Category B, A and Suite 50% of per person twin fare; Luxury Suite 100% of per person twin fare. Single Supplements apply to all Land Programmes & Hotel Nights. Please call for details.

Deck Plans: See pages 182 - 183 of our 2020 Europe, Asia & Africa Brochure.

Airport Transfers: Tan Son Nhat International Airport Ho Chi Minh City to Hotel - €25 per person. Hotel to Siem Reap International Airport - €25 per person. Hotel to Noi Bai International Airport Hanoi - €25 per person.

Land Programmes: 3 night pre- or post- cruise land programme in Bangkok available. Please call for more details.

Extra hotel nights are available: Please call for prices & availability.

Visas: Visas are required for travel to Vietnam and Cambodia. Passengers with a 15-night cruise and land itinerary must obtain a multiple entry visa for Vietnam (as there are two different points of entry into the country) and a single entry visa for Cambodia. Those booked on an 11 night Cruise/Land package must obtain single entry visas for Vietnam and Cambodia. Please consult with your Embassy or Consulate for more information.

Note: Itinerary is subject to change. For the most up-to-date information, please refer to the itinerary schedule provided with your final documents.

*Book by 31st December 2019 and save up to €1000 per person on selected sailings. Fares shown do not include savings. Visit www.amawaterways.eu or contact your Travel Agent for full details.

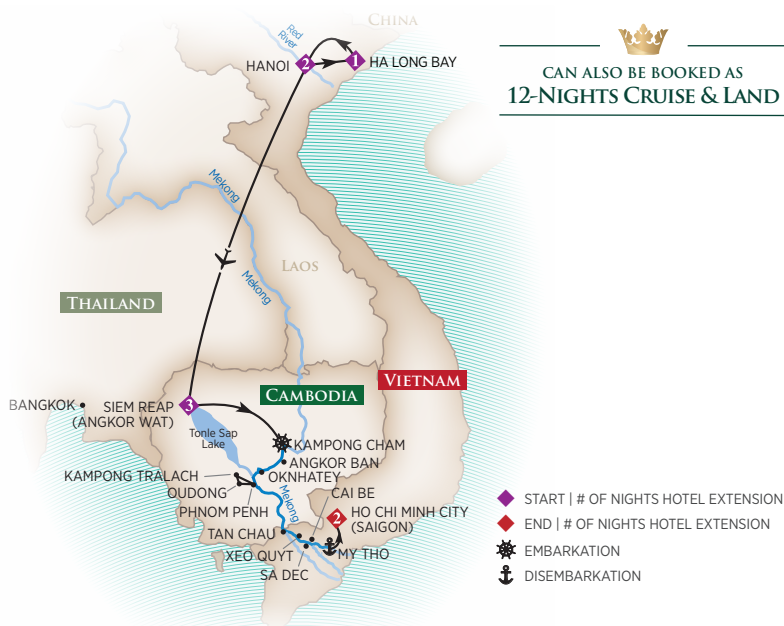


Ha Long Bay, Vietnam

RICHES OF THE MEKONG

15 NIGHTS | HANOI, VIETNAM TO HO CHI MINH CITY, VIETNAM

2 nights Hanoi, 1 night Ha Long Bay, 3 nights Siem Reap, 7-night Cambodia to Vietnam cruise and 2 nights Ho Chi Minh City



DAILY PROGRAMME

	DAY	DESTINATION	ACTIVITIES
15 NIGHT CRUISE & LAND PACKAGE	1	Hanoi, Vietnam	Hotel check-in
	2	Hanoi	City tour and rickshaw ride Water Puppet Show
	3	Hanoi Ha Long Bay, Vietnam	Coach transfer to Ha Long Bay Overnight cruise
	4	Ha Long Bay	Transfer to airport Flight to Siem Reap
	5	Siem Reap, Cambodia	Hotel check-in
12 NIGHT CRUISE & LAND PACKAGE		Siem Reap	Angkor Thom, Ta Prohm and Banteay Srei temples
	6	Siem Reap	Angkor Wat
	7	Kampong Cham, Cambodia	★ EMBARKATION Phnom Pros & Phnom Srei "Twin Mountain" visit Welcome Dinner
	8	Angkor Ban, Cambodia	Walking tour
		Oknhatey Village, Cambodia	Visit Silk Village and local elementary school
	9	Phnom Penh, Cambodia	Cruise to Phnom Penh
		Oudong, Cambodia	Buddhist Blessing Ceremony
		Kampong Tralach, Cambodia	Oxcart ride
		Phnom Penh	Tuk tuk orientation tour
	10	Phnom Penh	Killing Fields and Genocide Museum excursion OR Central Market
			Royal Palace and National Museum
	11	Border Crossing	Border Crossing from Cambodia to Vietnam
	12	Tan Chau, Vietnam	Trishaw ride to craftsmen's workshops OR Local village
	13	Sa Dec, Vietnam	Local boat ride to Sa Dec Visit local market
		Xeo Quyt, Vietnam	Xeo Quyt excursion
		Cai Be, Vietnam	Visit local workshops and historic Kiet Old House
	14	Ho Chi Minh City, Vietnam	⚓ DISEMBARKATION (My Tho Port) Coach transfer to Ho Chi Minh City City tour
	15	Ho Chi Minh City	Chu Chi Tunnels
	16	Ho Chi Minh City	Hotel check-out

For full details please visit www.amawaterways.eu

SAVE UP TO €1,000pp
BOOK BY 31 DECEMBER 2019*

DATES & FARES

EMBARKATION DATE	SHIP NAME	12 NIGHT CRUISE/LAND STARTS SIEM REAP		15 NIGHT CRUISE/LAND STARTS HANOI	
		PACKAGE START DATE	12 NIGHT CRUISE/LAND	PACKAGE START DATE	15 NIGHT CRUISE/LAND
2020					
Jan 13	AmaDara	Jan 10	€3,740	Jan 07	€4,874
Jan 27	AmaDara	Jan 24	€3,740	Jan 21	€4,874
Feb 10	AmaDara	Feb 7	€3,740	Feb 04	€4,874
Feb 24	AmaDara	Feb 21	€3,740	Feb 18	€4,874
Mar 09	AmaDara	Mar 6	€3,656	Mar 03	€4,790
Mar 23	AmaDara	Mar 20	€3,490	Mar 17	€4,624
Apr 06	AmaDara	Apr 3	€3,323	Mar 31	€4,457
Apr 13	AmaDara	Apr 17	€3,156	Apr 07	€4,290
Aug 10	AmaDara	Aug 7	€3,156	Aug 04	€4,290
Aug 24	AmaDara	Aug 21	€3,240	Aug 18	€4,374
Sep 07	AmaDara	Sep 4	€3,406	Sep 01	€4,540
Sep 21	AmaDara	Sep 18	€3,573	Sep 15	€4,707
Oct 05	AmaDara	Oct 2	€3,740	Sep 29	€4,874
Oct 19	AmaDara	Oct 16	€3,740	Oct 13	€4,874
Nov 02	AmaDara	Oct 30	€3,740	Oct 27	€4,874
Nov 16	AmaDara	Nov 13	€3,740	Nov 10	€4,874
Nov 30	AmaDara	Nov 27	€3,740	Nov 24	€4,874
Dec 14	AmaDara	Dec 11	€3,740	Dec 08	€4,874
Dec 28	AmaDara	Dec 25	€3,823	Dec 22	€4,957
2021					
Jan 11	AmaDara	Jan 08	€3,823	Jan 05	€4,957
Jan 25	AmaDara	Jan 22	€3,823	Jan 19	€4,957
Feb 08	AmaDara	Feb 05	€3,823	Feb 02	€4,957
Feb 22	AmaDara	Feb 19	€3,823	Feb 16	€4,957
Mar 08	AmaDara	Mar 05	€3,740	Mar 02	€4,874
Mar 22	AmaDara	Mar 19	€3,573	Mar 16	€4,707
Apr 05	AmaDara	Apr 02	€3,406	Mar 30	€3,540
Apr 19	AmaDara	Apr 16	€3,240	Apr 13	€4,374

Cruise/Land Fares: Fares are per person, based on double occupancy of a Cat. C deluxe outside stateroom with balcony.

To upgrade to a higher category, please add the following per person:

AMADARA

CAT.	DECK	STATEROOM	SQ. M	ADD'L
B	Sa Dec, Saigon & Tonle	French/Outside Balcony	23	€583
A	Saigon	French/Outside Balcony	23	€833
S	Sa Dec	French/Outside Balcony	34	€1,249
LS	Sa Dec	French/Outside Balcony	47	€2,416

Single Supplement Cruise: Category C 25% of per person twin fare; Category B, A and Suite 50% of per person twin fare; Luxury Suite 100% of per person twin fare. Single Supplements apply to all Land Programmes & Hotel Nights. Please call for details.

Deck Plans: See pages 182 - 183 of our 2020 Europe, Asia & Africa Brochure.

Airport Transfers: Noi Bai International Airport Hanoi to Hotel - €25 per person. Siem Reap International Airport to Hotel - €25 per person. Hotel to Tan Son Nhat International Airport Ho Chi Minh City - €25 per person.

Land Programmes: 3 night pre- or post- cruise land programme in Bangkok available. Please call for more details.

Extra hotel nights are available: Please call for prices & availability.

Visas: Visas are required for travel to Vietnam and Cambodia. Passengers with a 15-night cruise and land itinerary must obtain a multiple entry visa for Vietnam (as there are two different points of entry into the country) and a single entry visa for Cambodia. Those booked on a 12 night Cruise/Land package must obtain single entry visas for Vietnam and Cambodia. Please consult with your Embassy or Consulate for more information.

Note: Itinerary is subject to change. For the most up-to-date information, please refer to the itinerary schedule provided with your final documents.

*Book by 31st December 2019 and save up to €1000 per person on selected sailings. Fares shown do not include savings. Visit www.amawaterways.eu or contact your Travel Agent for full details.



Discovering old ruins of Ta Prohm, Cambodia

AMAWATERWAYS BOOKING CONDITIONS

Your contract is with AmaWaterways Limited of Suite B, Abbots Place, Walnut Tree Close, Guildford, Surrey GU1 4RW, company number 10184331. These booking conditions, together with our Privacy Policy, Passenger Ticket Contract and the written information we brought to your attention before we confirmed your booking, sets out the conditions of the contract between you and AmaWaterways Limited and our contractual commitments to each other.

It is important that you read the following booking conditions carefully as they are the basis of your contract with AmaWaterways Limited.

Definitions

(a) References within the booking conditions to “departure dates” means the date the services we have agreed to provide commence.

(b) The references to “you” and “your” means the persons named in the booking (including any person or persons added or substituted subsequently).

(c) “We” “Us” and “Our” means AmaWaterways Limited.

(d) References to “arrangements”, “travel arrangements” or “holiday” mean the services we have agreed to provide to or provide you with under your booking with us.

1 Your Holiday Contract

1.1 When you make your booking you agree that you have authority to accept and do accept on behalf of yourself and each person named in your booking, the terms of these Booking Conditions. The person making the booking (“the party leader”) must be at least 18 years of age and authorised to do so by all persons named in the booking and the parent or guardian of all party members under the age of 18 years, when the booking is made. The party leader on behalf of themselves and each member of the party consents to the use of information in accordance with our Privacy Policy.

1.2 The party leader is responsible for making all payments due to us under the booking. All party members named within the booking are jointly and severally liable for all payments due under the booking.

1.3 A contract will exist as soon as we issue a booking confirmation invoice to the party leader or your travel agent. The contract is made in the terms of these booking conditions, which are governed by English law and the jurisdiction of the English Courts. You may choose the law and jurisdiction of Scotland or Northern Ireland if you wish to do so and you are resident in Scotland or Northern Ireland.

1.4 Once you have received your booking confirmation invoice please check this carefully together with all your other documents we or your travel agent have sent to you. If any of the information contained within any of these documents is incorrect or incomplete, please notify us immediately in writing as it may not be possible to make later changes to it. We cannot accept any liability if we are not notified of any inaccuracies within 7 days of issue of the booking confirmation invoice to you.

1.5 We reserve the right to refuse to accept bookings in our absolute discretion without stating the reason for doing so.

1.6 When you book your holiday it may not be possible to confirm your precise air or rail arrangements due to airline and rail operator booking restrictions. Your confirmation invoice and/or ATOL certificate will set out the arrangements reserved for you and/or any provisional reservations or those arrangements we plan to reserve for you. Some airlines charge for luggage separately and some flights may be indirect. These may also be subject to change by your airline or rail operators.

1.7 We cannot confirm any specific airline or rail seat numbers and reserve the right to make changes to your flight and/or rail times but will notify you of any such changes as soon as possible.

2 Special Requests

If you have a special request, please advise us or your travel agent at the time of booking. We cannot guarantee that the request will be met and any failure to do so will not be a breach of contract on our part. Confirmation that a request has been noted will be acknowledged by email. We are unable to accept bookings which are conditional upon a special request being met and these will be treated by us as a standard booking.

3 Financial Protection

3.1 We provide financial security for package holidays which include flights, by way of our ATOL (Air Travel Organisers Licence) granted by the Civil Aviation Authority (CAA), CAA House, 49-59 Kingsway, London WC2B 6TE. Our ATOL number is 11252.

3.2 When you buy a flight inclusive holiday from us you will receive an ATOL certificate from us or your travel agent. This lists the flight, accommodation and/or other services that are financially protected, where you can get information on what this means for you and who to contact if things go wrong. We, or the suppliers identified on your

ATOL certificate, will provide you with the services listed on the ATOL certificate (or a suitable alternative). In some cases where neither we or the supplier are able to do so for reasons of insolvency, an alternative ATOL holder may provide you with the services you have bought or a suitable alternative (at no extra cost to you). You agree to accept that in those circumstances the alternative ATOL holder will perform those obligations and you agree to pay any money outstanding to be paid by you under your contract to that alternative ATOL holder. However, you also agree that in some cases it will not be possible to appoint an alternative ATOL holder, in which case you will be entitled to make a claim under the ATOL scheme (or your credit card issuer, where applicable).

3.3 If we, or the suppliers identified on your ATOL certificate, are unable to provide services listed (or a suitable alternative through an alternative ATOL holder or otherwise) for reasons of insolvency, the trustees of the Air Travel Trust may make payment to (or confer a benefit on) you under the ATOL scheme. You must agree that in return for such payment or benefit you must assign absolutely to those trustees any claims which you have or may have arising out of or relating to non-provision of the services, including any claim against us, the travel agent (or your credit card issuer, where applicable). You also agree that any such claim may be reassigned to another body, if that body has paid the sums you have claimed under the ATOL scheme.

3.4 For further information, visit the ATOL website at www.atol.org.uk

3.5 The price of our flight inclusive arrangements includes the amount of £2.50 per person as part of the ATOL Protection Contribution (APC) we pay to the CAA. This charge is included in our advertised prices. Not all holiday or travel services offered and sold by us will be protected by the ATOL scheme. Please ask us to confirm what protection may apply to your booking. ATOL protection is primarily for customers who book and pay in the United Kingdom.

3.6 We provide full insolvency protection for our package holidays which do not include flights by way of a bond held by ABTA Ltd of 30 Park Street, London SE1 9EQ, email: customerprotection@abta.co.uk. Our ABTA membership no. is Y6393. Please visit www.abta.com for further information.

4 Holiday Price

4.1 We reserve the right to alter the prices of any of the holidays shown on our website. You will be advised of the current price of the holiday you wish to book before your contract is confirmed.

4.2 When you make your booking you are required to pay a deposit of €320 per person for Europe and Asia itineraries and €1,920 per person for Africa itineraries or any other such deposit as advised at the time of booking (“the cruise deposit”). In addition, you will be required to pay the whole non-refundable amount of your air or rail travel, such amount being advised to you at the time of booking. For the Concierge Golf Programme, an additional deposit of €320 per person is required at the time of booking. If applicable, any Visa fees must also be paid in full in addition to the deposit. In addition, any Hotel Extra Nights will require at the time of confirmation of availability payment of a non-refundable deposit of €35 per stateroom. All prices shown are per person. The balance of the price of your holiday must be paid by the date shown in your booking confirmation invoice. It would usually be 90 days before your departure date. If your travel is due to commence within 90 days of your booking, then the total price should be payable at the time of booking. If the deposit and/or the balance is not paid in time we reserve the right to cancel your travel arrangements. Any monies paid to any travel agent in relation to your booking are held by the travel agent on our behalf at all times.

4.3 Unless stated otherwise, the price of your holiday includes each and all of the component parts described within your booking confirmation invoice.

4.4 Not included in the price of your holiday is travel insurance, excess baggage charges, gratuities and any food or drink or additional excursions or activities which are not confirmed as being part of your holiday arrangements. Additionally, any items or services purchased on board are not included in the cost of your holiday unless specifically stated.

4.5 Changes in the cost of the following mean that the price of your travel arrangement may change after you have booked. However, there will be no change within 20 days of your departure date.

- The price of transportation resulting from the cost of fuel or other power sources;
- The level of taxes or fees applicable to the holiday imposed by third parties not directly involved in the performance of your holiday, including tourist taxes, landing taxes or embarkation or disembarkation fees at ports and airports; or
- The exchange rates relevant to your package.

4.6 You may be charged for the amount of any increase in accordance with this clause plus the administration charge of €1 per person. However, if this means that you have to pay an increase of more than 8% of the total price of your confirmed holiday (excluding any insurance premiums, amendment charges and/or additional services or travel arrangements) you will have the option of (i) accepting the price increase and pay the requested amount (ii) accepting a change to another holiday if we are able to offer one (if this is of equivalent or higher quality you will not have to pay more but if it is of lower quality you will be refunded the difference in price) or (iii) cancelling your holiday booking and receiving a full refund of all monies paid to us, except for any insurance premiums and any amendment charges and/or additional services or travel arrangements which do not form part of your package. Should you decide to cancel for this reason, you must exercise your right to do so within 14 days of the issue date printed on your final invoice.

4.7 Should the price of your holiday go down due to the changes mentioned above, then any refund due will be paid to you. However, please note that travel arrangements that are purchased in local currency and some apparent changes have no impact on the price of your travel due to contractual and other protection in place.

5 If You Change Your Booking

5.1 If, after we have issued a booking confirmation invoice to you, you wish to change your travel arrangements, we will do our best to make these changes, although it may not always be possible to do so. Your request to change your booking must be made in writing by the party leader. You will be asked to pay an administration charge of €25 and any further costs we may incur in making this alteration. When changing your travel arrangements, the price will be based on the price applied on the date you make the change. The price may not be the same as when you first made your booking.

5.2 If you or any member of your party is prevented from travelling, that person may transfer their place to someone else subject to the following conditions:

- a) That person is introduced by you and satisfies each and all of the conditions applicable to the booked holiday;
- b) We are notified in writing of the request for transfer not later than 7 days before departure;
- c) You pay the outstanding balance payment, and the amendment fee of €25 per person transferring, as well as any additional fees, charges and other costs arising from the transfer;
- d) The transferee agrees to these booking conditions, and all of the terms of the Contract between us.
- e) Charges amounting to the full cost of any transferred flight and a replacement flight will be imposed in the event of any transfer.

5.3 You and the transferee will remain jointly and severally liable for the payment of all sums. If you are unable to find a replacement, the cancellation charges set out in clause 6.1 will apply in order to cover our estimated costs. Otherwise, no refunds will be given to passengers not travelling or for any unused service.

5.4 Any discount you received when you made your original booking may be altered or reduced when changes are made if this discount had subsequently been altered, reduced or withdrawn.

5.5 If you have paid accommodation supplements and the number of people in your accommodation changes you may have to pay extra.

5.6 Any changes to your departure date, airport, transportation, destination, accommodation or length of travel must apply to all members of your booking.

5.7 If you have taken out travel insurance it may not be possible to change or cancel this and as such, any premium cannot be refunded.

5.8 Scheduled airlines do not allow name changes prior to departure and may not allow these after the flight ticket has been issued. If you wish to make a name change and this is not permitted by your airline, it will be necessary to cancel your flight, lose the money paid in respect of that flight and pay the full cost of another flight, which may not be the same flight or at the same cost as the one you have cancelled.

6 If You Cancel Your Booking

6.1 If you, or any member of your party, cancel your travel arrangements at any time, written notification from the person who made the booking must be received by us at our registered office or by email at amares-intl@amawaterways.com. Since we incur costs in cancelling your travel arrangements, the following cancellation charges will be payable by you. The cancellation charge is a percentage calculated on basis of the total costs payable by the person cancelling not refundable in the event of cancellation.

DAYS BEFORE DEPARTURE	CRUISE, LAND, & CONCIERGE GOLF CANCELLATION CHARGES	AIR & RAIL CANCELLATION CHARGES
More than 121 days prior to departure	€160 per person – Europe & Asia €960 per person – Africa €160 per person additional – Concierge Golf	100%
120-90 days	Loss of Deposit	
89-60 days	35%	
59-30 days	50%	
29-7 days	80%	
Less than 7 days	100%	

6.2 You have the right to cancel your holiday before departure without paying a cancellation charge in the event of “unavoidable and extraordinary circumstances” occurring at your holiday destination or its immediate vicinity and which significantly affects the performance of the holiday or which significantly affects transport arrangements to the destination. In these circumstances, we shall provide you with a full refund of the monies you have paid but we will not be liable to pay you any compensation.

6.3 For the purposes of this clause, examples of “unavoidable and extraordinary circumstances” include warfare, acts of terrorism, significant risks to human health such as the outbreak of serious disease at the travel destination or natural disasters such as floods, earthquakes or weather conditions which make it impossible to travel safely to your destination.

7 If We Change or Cancel Your Booking

7.1 Once your booking has been confirmed we will make every effort to provide you with the booked holiday arrangements. Occasionally, it may be necessary to amend or cancel whole or part of your holiday. We will notify you or your travel agent of any alteration or cancellation as soon as we reasonably can.

7.2 Independent travel arrangements (e.g. flights, airport parking, car hire, etc) that you may arrange separately do not form part of our contract with you. Should we need to make changes to your travel arrangements, we will not be liable for any amendment or any cancellation charges incurred by you in respect of any such independent travel arrangements.

7.3 If, before the start of your holiday, we are constrained by circumstances beyond our control to significantly alter any of the main characteristics to your holiday, we will offer you the choice of either (a) accepting the changed arrangements (b) accepting an offer for an alternative holiday with comparable facilities from us, if available (we will refund you any price difference if the alternative is of a lower value) or (c) cancel your booking completely in which case we will refund you all monies paid by you. Please note that the above options are not available where any change made is a minor one. A significant change may include change of accommodation to that of a lower category and/or price.

7.4 If we make a significant change or cancel less than 14 days before departure (other than reason of non-payment of travel arrangements by you, events beyond our control (paragraph 8 below) or minimum group size numbers not being reached (paragraph 10 below), we will also pay you compensation as detailed below:

Period of Notice We Give to You Before Departure	Compensation to Each Full Fare Passenger
98+ Days	€0
78-43 Days	€10
42-29 Days	€20
28-15 Days	€30
14-0 Days	€40

You are required to advise us within 7 days of being notified of a significant change whether you wish to: (a) accept a proposed change or (b) cancel your booking and receive a refund. If you have not notified us within 7 days, we will write to you again to obtain confirmation of your choice of the options above. If you fail to respond within a further 7 days, we will cancel your booking and refund all payments made by or on behalf of you.

7.5 Please note that compensation referred to at 7.4 above and the options referred to at 7.3 above do not apply to any minor changes made by us.

8 Events Beyond Our Control

Please note that compensation will not be payable, and we will accept no liability beyond offering you the options above where:

(a) we are constrained to make a significant change or cancel your booking as a result of unusual and unforeseeable

circumstances beyond our control. These circumstances will usually include but are not limited to, war, threat of war, riots, civil disturbances, terrorist activity and its consequences, industrial disputes, any failure to secure flying rights, natural and nuclear disaster, fire, epidemics, health risks and pandemics and unavoidable and unforeseeable technical problems with transport reasons beyond our control or that of our suppliers, closed or congested airports or ports, hurricanes and other actual or potential severe weather conditions, and any other similar events; or

(b) we are constrained to cancel your booking because the minimum numbers of booking required have not been reached and we have notified you within the time periods specified at section (10) of these booking conditions; or

(c) we cancel as a result of your failure to comply with any of the requirements of these booking conditions entitling us to cancel; or 7

(d) we make a significant change or cancel your arrangements more than 14 weeks before departure; or

(e) where the change or cancellation by us arises out of alterations to the confirmed booking request by you.

9 Post Departure Changes

9.1 If we are unable to provide a significant proportion of the holiday services that you have booked with us after your departure, we will, where possible, make alternative arrangements for you at no extra charge and if appropriate in all the circumstances we will pay you reasonable compensation.

9.2 A change of accommodation to an equivalent or higher standard is also not regarded as significant nor are alterations to your itinerary which do not materially affect your holiday.

10 Delayed Return

10.1 In accordance with the Package Travel and Linked Travel Arrangements Regulations 2018, where it is impossible for you to return to your departure point on the return date of your package due to “unavoidable and extraordinary circumstances” we shall provide you with the necessary accommodation for a period not exceeding 3 nights per person. Where possible, this accommodation shall be of comparable standard to the accommodation booked by you under the package. For the purposes of this clause, examples of “unavoidable and extraordinary circumstances” include warfare, acts of terrorism, significant risks to human health such as the outbreak of serious disease at the travel destination or natural disasters such as floods, earthquakes or weather conditions which make it impossible to travel safely to the travel destination.

10.2 The limitation of costs for 3 nights' accommodation referred to above does not apply to persons with reduced mobility as defined by Article 2 of Regulation (EC) 1107/2006 and does not apply to persons of reduced mobility travelling by air and any other person accompanying them, pregnant women and unaccompanied minors as well as persons in need of specific medical assistance, provided that you have notified us of their needs at least 48 hours prior to departure.

11 Our Liability to You

11.1 We agree to perform and provide the travel arrangements which make up your booking with reasonable skill and care. If the contract you have with us is not performed or is improperly performed by us or any of our suppliers, we will pay you appropriate compensation if this has affected your enjoyment of your holiday. We will not be liable for any failure in the performance of the contract with you if this is due to: -

a) The fault of yourself and/or another member of your party;

b) A third party unconnected with the provision of the travel arrangements and where failure is unforeseeable or unavoidable;

c) Unusual and unforeseeable circumstances beyond our control, the consequences of which could not have been avoided even if all due care had been exercised;

d) An event which neither we nor our suppliers, even with all due care, could have foreseen or forestalled.

11.2 Our liability to you and any member of your party, except in cases involving death, injury or illness, shall be limited to a maximum of three times the cost of your booking. Our liability will also be limited in accordance with and/or in an identical manner to

a) The contractual terms of the suppliers we use in the provision of your holiday arrangements form part of your contract with us. These terms are incorporated into this contract as are;

b) Any relevant international convention, for example the Montreal Convention in respect of travel by air, the Athens Convention in respect of travel by sea, the Berne Convention in respect of travel by rail, and the Paris Convention in respect of the provision of accommodation, which limit the amount of compensation you can claim for death, injury, delay to passengers, and loss, damage and delay to luggage.

11.3 We will not accept responsibility for any services which do not form part of your contract with us. These may include any excursion purchased during the course of your holiday and any additional services or facilities which we have not agreed to arrange or provide as part of our contract with you.

11.4 You must inform us, without undue delay, taking into account the circumstances of the case, of any lack of conformity which you perceive during the performance of a travel service included in your package travel contract.

11.5 If we are found liable for loss and/or damage to your luggage or personal possessions (including money) our maximum liability to you is limited to €1,000 per person unless a lower limitation applies under this contract or by virtue of international conventions.

11.6 Where you have booked a “cruise only” holiday we do not accept liability for the costs of flights and/or any other travel arrangements in the event of changes being made to the scheduled departure or arrival times or locations of the cruise vessel.

12 Assistance by Us During the Course of Your Booking

If your contract with us is not performed or is improperly performed by us as a result of a failing attributable to a third party unconnected with the provision of holiday services, or as a result of failures due to unusual or unforeseeable circumstances beyond our control the consequence of which could not have been avoided even with all due care, or as a result of an event which we or our suppliers, even with all due care, could not have foreseen or forestalled, and you suffer injury or other material loss, we will offer to provide you with prompt assistance as is reasonable in the circumstances. If you or any member of your party suffers during the course of your holiday any difficulty as a result of any activity which does not form part of your contracted holiday arrangements, we will offer you prompt assistance without undue delay. Such assistance may include assisting you in making communications and helping you to find alternative travel arrangements. If the difficulty is caused intentionally by you or as a result of your negligence, we may charge a reasonable fee for that assistance which will not exceed the actual cost incurred by us. All assistance (financial or otherwise) is subject to our reasonable discretion and subject to you notifying us promptly of your need. If you are entitled to have any costs and expenses arising from such an incident met by or from any insurance policy or if you recover any costs and expenses relating to the incident from a third party, you must repay us the costs and expenses we have incurred in assisting you.

13 Passport, Visa, Documentation, Immigration and Health Requirements

13.1 The passport and visa requirements of yourself and your party, together with any other immigration requirements, are your responsibility and you should check these with the relevant embassies and/or consulates prior to travel. We do not accept any responsibility if you cannot travel if you have not complied with the relevant requirements in force prior to and at the time of travel.

13.2 It is also your responsibility to check all compulsory and recommended health requirements, including vaccinations, prior to travel and to ensure that you are in receipt of all and any necessary vaccination certificates and other health documentation. The costs of obtaining any such documentation are your responsibility and we are unable to accept any responsibility or liability if your travel arrangements are affected as a result of the failure to do so by yourself or any member of your party.

13.3 You must provide us with full details of any existing medical condition, allergy or disability that may affect your travel arrangements (including, in particular, any accommodation requirements) at the time of your booking. If in our reasonable opinion your chosen travel arrangements are not suitable for your medical problem or disability or you are not travelling with someone who can provide all assistance you may reasonably require, we have the right to refuse to accept the booking. If you do not give us full details of your medical problem or disability we can also cancel the booking when we find out full details if in our reasonable opinion, the travel arrangements are not suitable, or you are not travelling with someone who can provide all assistance reasonably required. If we cancel your booking as a result of this, the cancellation charges set out in Clause 6.1 above will apply.

13.4 If we are required or asked to reissue tickets that have been lost, destroyed or stolen and we agree to do so, any charges incurred as a result of this will be payable by you.

14 Denied Boarding Regulations and Transportation Delays

14.1 If any flight you have booked is cancelled or delayed, your flight ticket is downgraded, or boarding is denied by your airline in circumstances which would entitle you to claim compensation against the airline under EC Regulation No 261/2004 – the Denied Boarding Regulations 2004, you must pursue the airline for the compensation due to you. All sums you receive or are entitled to receive from the airline concerned by virtue of these Regulations represent the full amount of your entitlement to compensation or any other payment arising from such cancellation, delay, downgrading or denied boarding. The fact a delay may entitle you to cancel your flight does not automatically entitle you to cancel any other arrangements even where those arrangements have been made in conjunction with your flight. We have no liability to make any payment to you in relation to the Denied Boarding Regulations or in respect of any flight cancellation or delay, downgrading of any flight ticket or denial of any boarding as the full amount of your entitlement to any compensation or other payment (as dealt with above) is covered by the airline's obligations under the Denied Boarding Regulations. If your airline does not comply with these rules you should complain to the Civil Aviation Authority at www.caa.co.uk.

14.2 Unfortunately, flight or other transport delays sometimes occur. Depending on the length of the delay and surrounding circumstances, the carrier concerned should provide refreshments when and where appropriate. We are generally not in a position to provide any assistance in the event of flight or other transportation delays and cannot accept any liability except where expressly stated in these Booking Conditions.

15 Insurance

15.1 You must take out suitable insurance for all your needs before you travel, and it is a condition of this contract that you or members of your party do so. We cannot be held responsible for any costs you may incur as a result of failing to do so.

15.2 If you take part in activities whilst travelling that have been organised and arranged independently of us, participation is at your own risk and it is your responsibility to ensure that you have obtained the relevant insurance.

16 Your Responsibilities and Behaviour Whilst on Holiday

16.1 As part of your booking with us, you are accepting liability for any loss or damage caused by you or any member of your party during the course of your holiday. Payment for any loss or damage must be made to us or our supplier at the time that it occurs or as soon as is reasonably practicable thereafter. If the cost of the loss or damage is not known at the time, we will reasonably estimate it and if this reasonable estimate exceeds the amount paid, you must pay the difference once known, and if it is less, the difference will be refunded to you. You will also be responsible for, and agree to indemnify us, in respect of any claim subsequently made against us and all costs incurred by us (including our own and any other party's full legal costs) arising from your actions.

16.2 You are also responsible for the behaviour of yourself and other members of your party. We can refuse to accept you as a customer or refuse to continue dealing with you and/or any other member of your party by terminating your travel arrangements if yours or their behaviour is or is likely to be, in our reasonable opinion or in the reasonable opinion of our suppliers, disruptive, upsetting or dangerous to yourself or anyone else, or if you or any member of your party have caused or are likely to cause damage to property. In these circumstances, we will not pay any refund, compensation or other sum whatsoever or any costs or expenses incurred by you if we have to terminate your travel arrangements due to such unacceptable behaviour. In this situation we will have no further responsibility for you or any other member of your party (including any return travel arrangements). If your unacceptable behaviour means that you are not able to board your outward flight, we will treat your booking as cancelled from that moment and you will have to pay the full cancellation charges referred to in Clause 6.1 above.

17 Excursions and Activities and Resort Information

Excursions, tours or other activities that you book or pay for whilst you are on holiday do not form part of the travel arrangements provided by us. Your contract will be with the operator or provider of that excursion, tour or activity and not with us. We are not responsible for the provision of the excursion, tour or activity or anything that may happen during the course of its provision by the operator. We do not accept any liability in relation to any such excursion, tour or activity and these Booking Conditions do not apply to them.

18 Mooring, Docking and Adverse Weather Water Conditions

Occasionally, changes to your itinerary may be necessary due to adverse weather conditions, high or low water levels, mooring restrictions and lock closures. In some instances, it may be necessary in the interests of safety for sundeck access to be restricted or closed. In addition, it may sometimes be necessary for vessels to dock alongside each other resulting in partially or totally obstructed views. Unfortunately, these are events outside of our control and we can accept no liability for them.

19 Local Charges & Tourist Taxes

Unless we have stated that a local service or facility is included or free in our accommodation description, you may be asked to pay a charge locally, for example, local tourist tax, room services (e.g. minibar), health and beauty treatments, snacks, drinks, etc. Tourist taxes may be payable by you when you check out of your holiday accommodation.

20 Local Health & Safety Standards

You should be aware that it is the standards and health and safety requirements of the country in which the services which make up your travel arrangements are provided which apply and not those of the United Kingdom. These standards will be different to those of the United Kingdom and may sometimes be lower.

21 Our Website, Brochure and Advertising

The information contained in our website, brochure and advertising material is our responsibility and to the best of our knowledge and belief it is correct at the time of publication. Occasionally errors may occur, and information may change, and you must therefore check all the details of your travel arrangements at the time of booking.

22 If You Have a Complaint

22.1 In the unlikely event that you have cause to complain during the course of your travel arrangements with us, you must bring it to our attention immediately. If your complaint is not resolved then you must repeat your complaint in writing within 28 days of the end of your travel arrangements with us by writing to us at our Registered Office or emailing us at customerrelations-intl@amawaterways.com. You must provide any booking reference and all other relevant information to enable us to fully investigate your complaint. Any complaints which do not involve death, personal injury or illness and which are not made in accordance with this procedure we are unable to accept liability.

22.2 We are a member of ABTA, membership no. Y6393. Through our membership we can offer you an arbitration scheme for the resolution of disputes arising out of, or in connection with your holiday. Further information on the ABTA Code of Conduct and the arbitration scheme can be found at www.abta.com/consumer-services.

22.3 The arbitration scheme is arranged by ABTA and administered independently by the Centre for Effective Dispute Resolution. It provides a straightforward and inexpensive method of arbitration on documents alone with restricted liability in respect of costs. Full details will be provided on request or can be obtained from the ABTA website.

22.4 The scheme does not apply to claim for an amount greater than £5,000 per person and there is a limit of £25,000 per booking. It does not apply to claims in respect of physical injury or illness. The scheme can deal with compensation claims which include an element of minor injury or illness, subject to a limit of £1,500 per person that can be awarded by the arbitrator.

22.5 The application for arbitration and statement of claim must be received by CEDR Solve within 18 months from the date of return of the holiday. Outside this time limit, arbitration may still be available under the scheme if the company agrees but the ABTA code does not require such agreement.

22.6 For injury and illness claims, you may use the ABTA/CEDR Solve mediation procedure. This is a voluntary scheme and requires us to agree for mediation to go ahead. Details can be provided on request or from www.abta.com.

23 Data Protection

In order to process your booking and to make sure that your holiday arrangements run smoothly, we need to pass the information which you provide on to relevant suppliers such as airlines, transfer companies, hotels etc. The information which we provide may also be provided to credit checking companies and public authorities such as customs and immigration if required by law. Where your holiday is outside the European Economic Area (EEA), controls on data protection in your destination country may not be as strong as they are in the UK. However, we will not pass your information on to any person who is not responsible for part of your holiday arrangements. If we cannot pass your information on to relevant suppliers, we cannot provide your booking, therefore in making this booking, you consent to your information being passed on to them. Your data controller is: AmaWaterways Ltd. You are entitled to a copy of your information held by us and if you would like to see this, please ask us. It may be necessary to make an administration charge for providing this to you.

Please refer to our Privacy Policy at www.amawaterways.eu/privacy-policy and which forms part of these booking conditions.

YOUR KEY RIGHTS UNDER THE PACKAGE TRAVEL AND LINKED TRAVEL ARRANGEMENTS REGULATIONS 2018

General

The combination of travel services offered to you is a package within the meaning of the Package Travel and Linked Travel Arrangements Regulations 2018.

Therefore, you will benefit from all EU rights applying to the packages. AmaWaterways Limited will be fully responsible for the proper performance of the package as a whole.

Additionally, as required by law, AmaWaterways Limited has protection in place to refund your payments and, where transport is included in the package, to ensure your repatriation in the event that it becomes insolvent.

KEY RIGHTS UNDER THE PACKAGE TRAVEL AND LINKED TRAVEL ARRANGEMENTS REGULATIONS 2018

- Travellers will receive all essential information about the package before concluding the package travel contract.

- There is always at least one trader who is liable for the proper performance of all the travel services included in the contract.

- Travellers are given an emergency telephone number or details of a contact point where they can get in touch with the organiser or the travel agent.

- Travellers may transfer the package to another person, on reasonable notice and possibly subject to additional costs.

- The price of the package may only be increased if specific costs rise (for instance fuel prices), and if expressly provided for in the contract, and in any event not later than 20 days before the start of the package. If the price increase exceeds 8% of the price of the package, the traveller may terminate the contract. If the organiser reserves the right to a price increase, the traveller has a right to a price reduction if there is a decrease in the relevant costs.

- Travellers may terminate the contract without paying any termination fee and get a full refund of any payments if any of the essential elements of the package, other than the price, has changed significantly. If before the start of the package the trader responsible for the package cancels the package, travellers are entitled to a refund and compensation where appropriate.

- Travellers may terminate the contract without paying any termination fee before the start of the package in the event of exceptional circumstances, for instance if there are serious security problems at the destination which are likely to affect the package.

- Additionally, travellers may at any time before the start of the package terminate the contract in return for an appropriate and justifiable termination fee.

- If, after the start of the package, significant elements of the package cannot be provided as agreed, suitable alternative arrangements will have to be offered to the traveller at no extra cost. Travellers may terminate the contract without paying any termination fee, where services are not performed in accordance with the contract and this substantially affects the performance of the package and the organiser fails to remedy the problem.

- Travellers are also entitled to a price reduction or compensation for damages or both where the travel services are not performed or are improperly performed.

- The organiser has to provide assistance if the traveller is in difficulty.

- If the organiser or the retailer becomes insolvent, payments will be refunded. If the organiser or, where applicable, the retailer becomes insolvent after the start of the package and if transport is included in the package, repatriation of the travellers is secured. AmaWaterways Limited has taken out insolvency protection with the following entities:

- For flight inclusive holidays: Civil Aviation Authority of 45-59 Kingsway, London WC2B 6TE, www.caa.co.uk, email: claims@caa.co.uk

- For package holidays that do not include a flight: ABTA – the Travel Association at 30 Park Street, London SE1 9EQ, www.abta.com, email: customerprotection@abta.co.uk

THE PACKAGE TRAVEL AND LINKED TRAVEL ARRANGEMENTS REGULATIONS 2018

Can be found at:

www.legislation.gov.uk/ukxi/2018/634/contents/made

THE PASSENGER TICKET CONTRACT

Can be found at:

www.amawaterways.eu/terms-conditions



For reservations visit your local Travel Agent or call
European & Scandinavian Reservations **+44 (0) 333 305 3926**

www.AmaWaterways.eu

Connect with us on



**TTG TRAVEL
AWARDS 2018**
RIVER CRUISE LINE
OF THE YEAR
Winner



AMAWATERWAYS LTD | ABBOTS PLACE, SUITE B | WALNUT TREE CLOSE | GUILDFORD | GU1 4RW | UK

FIRST EDITION
09194K